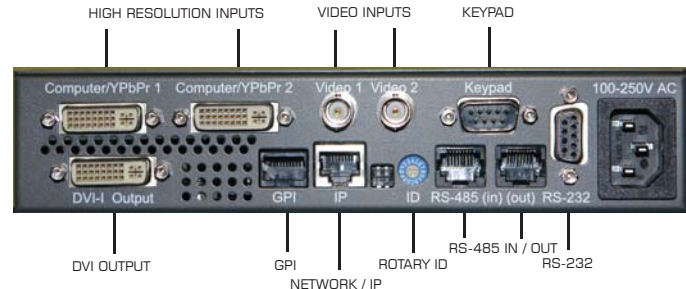


# RAINIER SERIES

## Entry-Level Multi-Image VGA / DVI & Video



### RAINIER - 2v

- Input: 2 auto-detect VGA / DVI (YPbPr) 480P 60 Hz, 720P 50/60 Hz, 576P 50 Hz, and 1080i 50/60 Hz
- Output Resolution up to 1600x1200 / 1920x1080 / 1920x1200
- Up to 26 internal presets
- On-screen labels, borders

### RAINIER 2a2v

- Input: 2 auto-detect composite video (PAL / NTSC) PLUS 2 auto-detect VGA / DVI (YPbPr) 480P 60 Hz, 720P 50/60 Hz, 576P 50 Hz, and 1080i 50/60 Hz
- Output Resolution up to 1600x1200 / 1920x1080 / 1920x1200
- Up to 26 internal presets
- On-screen labels, borders

### RAINIER - 2u2v

- Input: 2 auto-detect HD / SD-SDI / composite video (PAL / NTSC) PLUS 2 auto-detect VGA / DVI (YPbPr) 480P 60 Hz, 720P 50/60 Hz, 576P 50 Hz, and 1080i 50/60 Hz
- Output Resolution up to 1600x1200 / 1920x1080 / 1920x1200
- Up to 26 internal presets
- On-screen labels, borders

### RAINIER - 4a

- Input: 4 auto-detect composite video (PAL / NTSC)
- Output Resolution up to 1366x768 / 1440x900 / 1400x1050
- Up to 26 internal presets
- On-screen labels, borders
- Supports direct TSL Tally Interface

### RAINIER - 4a1v

- Input: 4 auto-detect composite video (PAL / NTSC) PLUS 1 auto-detect VGA / DVI (YPbPr) 480P 60 Hz, 720P 50/60 Hz, 576P 50 Hz, and 1080i 50/60 Hz
- Output Resolution up to 1600x1200 / 1920x1080 / 1920x1200
- Up to 26 internal presets
- On-screen labels, borders
- Supports direct TSL Tally Interface

### RAINIER - 8a1v

- Input: 8 auto-detect composite video (PAL / NTSC) PLUS 1 auto-detect VGA / DVI (YPbPr) 480P 60 Hz, 720P 50/60 Hz, 576P 50 Hz, and 1080i 50/60 Hz
- Output Resolution up to 1600x1200 / 1920x1080 / 1920x1200
- Up to 26 internal presets
- On-screen labels, borders
- Supports direct TSL Tally Interface

### RAINIER - 12a1v

- Input: 12 auto-detect composite video (PAL / NTSC) PLUS 1 auto-detect VGA / DVI (YPbPr) 480P 60 Hz, 720P 50/60 Hz, 576P 50 Hz, and 1080i 50/60 Hz
- Output Resolution up to 1600x1200 / 1920x1080 / 1920x1200
- Up to 26 internal presets
- On-screen labels, borders
- Supports direct TSL Tally Interface

### RAINIER - 16a1v

- Input: 16 auto-detect composite video (PAL / NTSC) PLUS 1 auto-detect VGA / DVI (YPbPr) 480P 60 Hz, 720P 50/60 Hz, 576P 50 Hz, and 1080i 50/60 Hz
- Output Resolution up to 1600x1200 / 1920x1080 / 1920x1200
- Up to 26 internal presets
- On-screen labels, borders
- Supports direct TSL Tally Interface

### RAINIER - 4d

- Input: 4 auto-detect SD-SDI / composite video (PAL / NTSC)
- Output Resolution up to 1366x768 / 1440x900 / 1400x1050
- Up to 26 internal presets
- On-screen labels, borders
- Audio Meters for Embedded Audio
- Supports direct TSL Tally Interface

### RAINIER - 4d1v

- Input: 4 auto-detect SD-SDI / composite video (PAL / NTSC) PLUS 1 auto-detect VGA / DVI (YPbPr) 480P 60 Hz, 720P 50/60 Hz, 576P 50 Hz, and 1080i 50/60 Hz
- Output Resolution up to 1600x1200 / 1920x1080 / 1920x1200
- Up to 26 internal presets
- On-screen labels, borders
- Audio Meters for Embedded Audio
- Supports direct TSL Tally Interface

### RAINIER - 8d1v

- Input: 8 auto-detect SD-SDI / composite video (PAL / NTSC) PLUS 1 auto-detect VGA / DVI (YPbPr) 480P 60 Hz, 720P 50/60 Hz, 576P 50 Hz, and 1080i 50/60 Hz
- Output Resolution up to 1600x1200 / 1920x1080 / 1920x1200
- Up to 26 internal presets
- On-screen labels, borders
- Audio Meters for Embedded Audio
- Supports direct TSL Tally Interface

### RAINIER - 12d1v / 16d1v

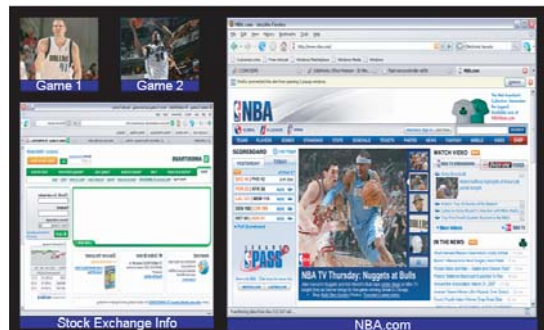
- Input: 12 or 16 auto-detect SD-SDI / composite video (PAL / NTSC) PLUS 1 auto-detect VGA / DVI (YPbPr) 480P 60 Hz, 720P 50/60 Hz, 576P 50 Hz, and 1080i 50/60 Hz
- Output Resolution up to 1600x1200 / 1920x1080 / 1920x1200
- Up to 26 internal presets
- On-screen labels, borders
- Audio Meters for Embedded Audio
- Supports direct TSL Tally Interface

# RAINIER SERIES

## Entry-Level Multi-Image VGA / DVI & Video



**RAINIER 4d** - 4 auto-detect SD-SDI / composite video (PAL / NTSC) inputs



**RAINIER 2u2v** - 2 auto-detect HD / SD-SDI / composite video (PAL / NTSC) inputs PLUS 2 auto-detect VGA / DVI (YPbPr) inputs



Set-Top Box 1080P Input      Computer 1080P Background Input

**RAINIER 2v** - 2 auto-detect VGA / DVI (YPbPr) inputs



**RAINIER 8d1v** - 8 auto-detect SD-SDI / composite video (PAL / NTSC) inputs PLUS 1 auto-detect VGA / DVI (YPbPr) input

### General Specifications

- Supports Avitech ASCII Protocol (AAP)
- Compatible with Galaxy control software
- Supports Avitech Simple Control Panel (MCC-SCP)
- Any image can be made to display at full-screen
- 8 GPI for tally or preset recalls
- Communication via RS-232
- Rainer-2v, 2a2v, 2u2v also support IP
- Dimensions:  
 Rainer-2v, 2a2v, 2u2v, 4a, 4a1v, 4d, 4d1v  
 1/2 rack, 8" W x 10" D, 20.3cm W x 25.4cm D  
 Rainer-8a1v, 8d1v  
 1 RU, 19" W x 10" D, 48.3cm W x 25.4cm D  
 Rainer-12a1v, 12d1v, 16a1v, 16d1v  
 2 RU, 19" W x 10" D, 48.3cm W x 25.4cm D

- Weight & Power:  
 Rainer-2v, 2a2v, 2u2v, 4a, 4a1v, 4d, 4d1v: 5 lbs, 2.3 Kgs. <15W  
 Rainer-8a1v, 8d1v: 10 lb, 4.55 Kgs., <30W  
 Rainer-12a1v, 12d1v: 15 lb, 6.82 Kgs., <45W  
 Rainer-16a1v, 16d1v: 20 lb, 9.09 Kgs., <60W

### RAINIER OPTIONS INCLUDE:

- RAINIER-Blank - Blank front panel to attach to a single 1/2 RU for Rainer Series
- RAINIER-RMT - Rackmount for 2 1/2 RU for Rainer Series
- DVII-DB15 - DVI to VGA connector
- YPbPr - DVI to YPbPr breakout cable
- S-Video Adaptor
- Rear-mount kit

## HEADQUARTERS

Avitech International Corporation  
 15333 NE 90th Street  
 Redmond, WA 98052-3561  
 USA  
 Phone: +1 (425) 885 3863  
 Toll Free: +1 (877) AVITECH (284-8324)  
 Fax: +1 (425) 885-4726  
 E-Mail: info@avitechvideo.com  
 Press & Media: Delamere Marketing  
 admin@delameremarketing.com

© Copyright 2008 Avitech International Corporation. All Rights Reserved

Specifications subject to change without notice

[www.avitechvideo.com](http://www.avitechvideo.com)

**MONITORING MADE EASY™**