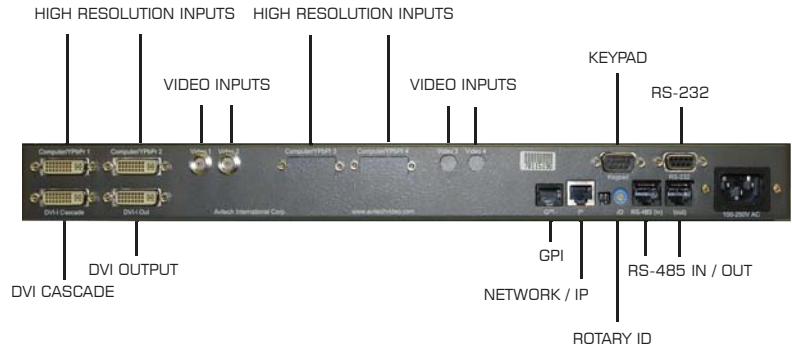


# VISUAL COMMAND CENTER

## VCC-8000 Multi-Format VGA / DVI & Video



### VCC-8002v

- Input: 2 auto-detect VGA / DVI (YPbPr) 480P 60 Hz, 720P 50/60 Hz, 1080i 50/60 Hz, 576P 50 Hz
- Output: Simultaneous DVI and RGB
- Output Resolution up to 1600x1200 / 1920x1080 / 1920x1200
- Up to 26 internal presets
- On-screen labels, borders, alarms
- Built-in digital clock (supports NTP)
- Any image can be displayed at full screen

### VCC-8004v

- Input: 4 auto-detect VGA / DVI (YPbPr) 480P 60 Hz, 720P 50/60 Hz, 1080i 50/60 Hz, 576P 50 Hz
- Output: Simultaneous DVI and RGB
- Output Resolution up to 1600x1200 / 1920x1080 / 1920x1200
- Up to 26 internal presets
- On-screen labels, borders, alarms
- Built-in digital clock (supports NTP)
- Any image can be displayed at full screen

### VCC-8004c

- Input: Total of 4 inputs  
2 auto-detect VGA / DVI (YPbPr) 480P 60 Hz, 720P 50/60 Hz, 1080i 50/60 Hz, 576P 50 Hz PLUS 2 auto-detect composite video (PAL / NTSC)
- Output: Simultaneous DVI and RGB
- Output Resolution up to 1600x1200 / 1920x1080 / 1920x1200
- Up to 26 internal presets
- On-screen labels, borders, alarms
- Built-in digital clock (supports NTP)
- Any image can be displayed at full screen

### VCC-8008c

- Input: Total of 8 inputs  
4 auto-detect VGA / DVI (YPbPr) 480P 60 Hz, 720P 50/60 Hz, 1080i 50/60 Hz, 576P 50 Hz PLUS 4 auto-detect composite video (PAL / NTSC)
- Output: Simultaneous DVI and RGB
- Output Resolution up to 1600x1200 / 1920x1080 / 1920x1200
- Up to 26 internal presets
- On-screen labels, borders, alarms
- Built-in digital clock (supports NTP)
- Any image can be displayed at full screen

### VCC-8004U

- Input: Total of 4 inputs  
2 auto-detect VGA / DVI (YPbPr) 480P 60 Hz, 720P 50/60 Hz, 1080i 50/60 Hz, 576P 50 Hz PLUS 2 auto-detect HD / SD-SDI / composite video (PAL / NTSC)
- Output: Simultaneous DVI and RGB
- Output Resolution up to 1600x1200 / 1920x1080 / 1920x1200
- Up to 26 internal presets
- On-screen labels, borders, alarms
- Built-in digital clock (supports NTP)
- Any image can be displayed at full screen

### VCC-8008U

- Input: Total of 8 inputs  
4 auto-detect VGA / DVI (YPbPr) 480P 60 Hz, 720P 50/60 Hz, 1080i 50/60 Hz, 576P 50 Hz PLUS 4 auto-detect HD / SD-SDI / composite video (PAL / NTSC)
- Output: Simultaneous DVI and RGB
- Output Resolution up to 1600x1200 / 1920x1080 / 1920x1200
- Up to 26 internal presets
- On-screen labels, borders, alarms
- Built-in digital clock (supports NTP)
- Any image can be displayed at full screen

### General Specifications

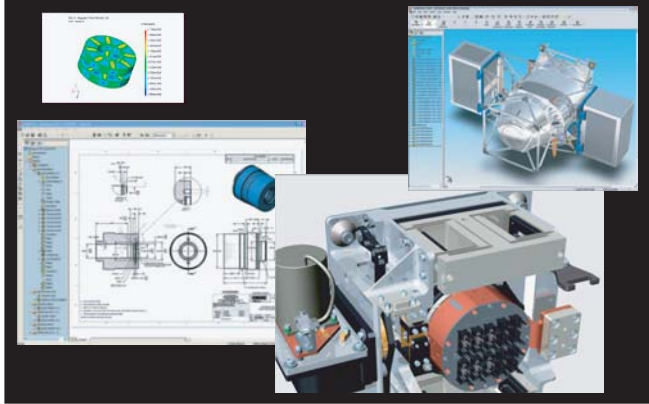
- Can be cascaded with MCC-8004, ACC-8000 (total of 15 modules)
- Supports Avitech ASCII Protocol (AAP)
- Compatible with both Cosmos and Galaxy Control Software
- 8 GPI for tally or preset recalls
- Dimension: 1 RU, 19" W x 10" D, 48.3cm W x 25.4cm D
- Weight: 8 lbs, 3.6 Kgs.
- Power: < 30W
- Communication via IP or RS-232

### VCC-8000 Series Options

- DVI – VGA adaptor
- YPbPr breakout cable

# VISUAL COMMAND CENTER

## VCC-8000 Multi-Format VGA / DVI & Video



**VCC-8004v** - 4 auto-detect VGA / DVI (YPbPr) inputs

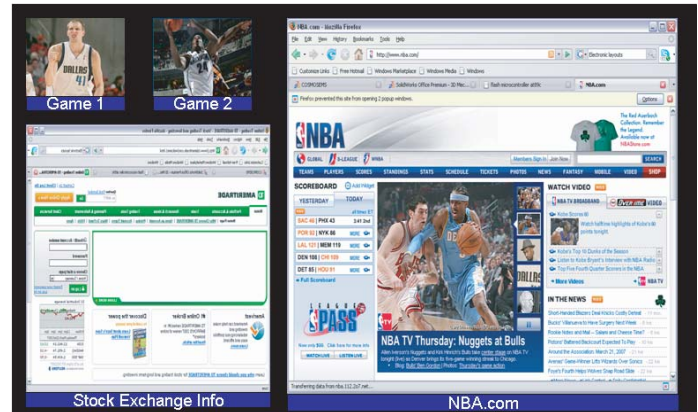


Set-Top Box 1080P Input      Computer 1080P Background Input

**VCC-8002v** - 2 auto-detect VGA / DVI (YPbPr) inputs



**VCC-8008c** - 4 auto-detect VGA / DVI (YPbPr) inputs  
PLUS 4 auto-detect composite video (PAL / NTSC) inputs



**VCC-8004c** - 2 auto-detect VGA / DVI (YPbPr) inputs  
PLUS 2 auto-detect composite video (PAL / NTSC) inputs

### HEADQUARTERS

Avitech International Corporation  
 15333 NE 90th Street  
 Redmond, WA 98052-3561  
 USA  
 Phone: +1 (425) 885 3863  
 Toll Free: +1 (877) AVITECH (284-8324)  
 Fax: +1 (425) 885-4726  
 E-Mail: [info@avitechvideo.com](mailto:info@avitechvideo.com)  
 Press & Media: Delamere Marketing  
[admin@delameremarketing.com](mailto:admin@delameremarketing.com)

© Copyright 2008 Avitech International Corporation. All Rights Reserved

Specifications subject to change without notice

[www.avitechvideo.com](http://www.avitechvideo.com)

**MONITORING MADE EASY™**