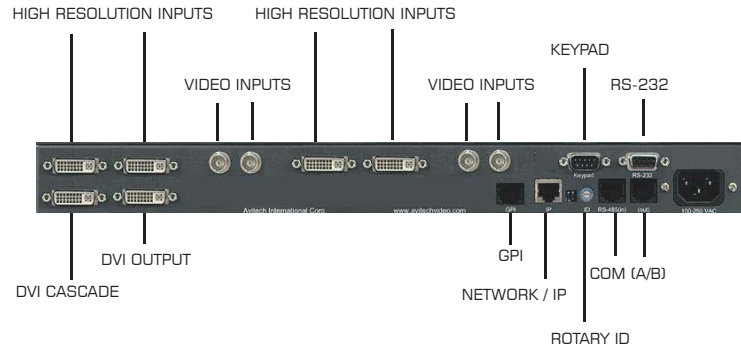


VISUAL COMMAND CENTER

VCC-8000 Multi-Format VGA / DVI & Video



VCC-8002v

- Input: 2 auto-detect VGA / DVI (YPbPr) 480P 60 Hz, 720P 50/60 Hz, 1080i 50/60 Hz, 576P 50 Hz
- Output: Simultaneous DVI and RGB
- Output Resolution up to 1600 x 1200 / 1920 x 1080 / 1920 x 1200
- Up to 26 internal presets
- On-screen labels, borders, alarms
- Built-in digital clock (supports NTP)

VCC-8004v

- Input: 4 auto-detect VGA / DVI (YPbPr) 480P 60 Hz, 720P 50/60 Hz, 1080i 50/60 Hz, 576P 50 Hz
- Output: Simultaneous DVI and RGB
- Output Resolution up to 1600 x 1200 / 1920 x 1080 / 1920 x 1200
- Up to 26 internal presets
- On-screen labels, borders, alarms
- Built-in digital clock (supports NTP)

VCC-8004c

- Input: Total of 4 inputs
2 auto-detect VGA / DVI (YPbPr) 480P 60 Hz, 720P 50/60 Hz, 1080i 50/60 Hz, 576P 50 Hz
PLUS 2 auto-detect composite video (PAL / NTSC)
- Output: Simultaneous DVI and RGB
- Output Resolution up to 1600 x 1200 / 1920 x 1080 / 1920 x 1200
- Up to 26 internal presets
- On-screen labels, borders, alarms
- Built-in digital clock (supports NTP)

VCC-8008c

- Input: Total of 8 inputs
4 auto-detect VGA / DVI (YPbPr) 480P 60 Hz, 720P 50/60 Hz, 1080i 50/60 Hz, 576P 50 Hz
PLUS 4 auto-detect composite video (PAL / NTSC)
- Output: Simultaneous DVI and RGB
- Output Resolution up to 1600 x 1200 / 1920 x 1080 / 1920 x 1200
- Up to 26 internal presets
- On-screen labels, borders, alarms
- Built-in digital clock (supports NTP)

VCC-8004U

- Input: Total of 4 inputs
2 auto-detect VGA / DVI (YPbPr) 480P 60 Hz, 720P 50/60 Hz, 1080i 50/60 Hz, 576P 50 Hz
PLUS 2 auto-detect HD / SD-SDI / composite video (PAL / NTSC)
- Output: Simultaneous DVI and RGB
- Output Resolution up to 1600 x 1200 / 1920 x 1080 / 1920 x 1200
- Up to 26 internal presets
- On-screen labels, borders, alarms
- Built-in digital clock (supports NTP)

VCC-8008U

- Input: Total of 8 inputs
4 auto-detect VGA / DVI (YPbPr) 480P 60 Hz, 720P 50/60 Hz, 1080i 50/60 Hz, 576P 50 Hz
PLUS 4 auto-detect HD / SD-SDI / composite video (PAL / NTSC)
- Output: Simultaneous DVI and RGB
- Output Resolution up to 1600 x 1200 / 1920 x 1080 / 1920 x 1200
- Up to 26 internal presets
- On-screen labels, borders, alarms
- Built-in digital clock (supports NTP)

General Specifications

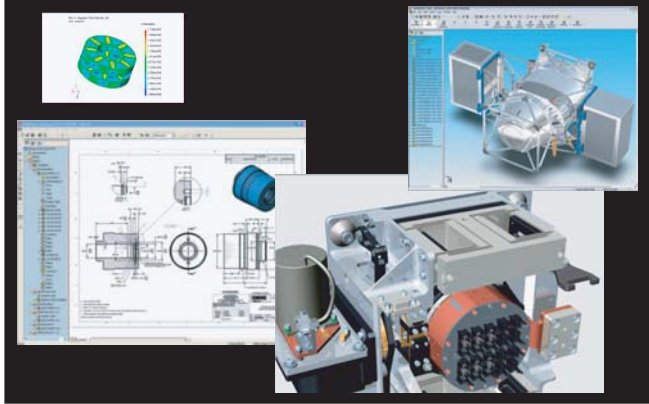
- Can be cascaded with MCC-8004, ACC-8000 (total of 15 modules)
- Supports Avitech ASCII Protocol (AAP)
- Compatible with both Cosmos and Galaxy Control Software
- 8 GPI for tally or preset recalls
- Dimension: 1 RU, 19" W x 10" D, 48.3cm W x 25.4cm D
- Weight: 8 lbs, 3.6 Kgs.
- Power: < 30W
- Communication via IP or RS-232

VCC-8000 Series Options

- DVI – VGA adaptor
- YPbPr breakout cable

VISUAL COMMAND CENTER

VCC-8000 Multi-Format VGA / DVI & Video



VCC-8004v - 4 auto-detect VGA / DVI (YPbPr)



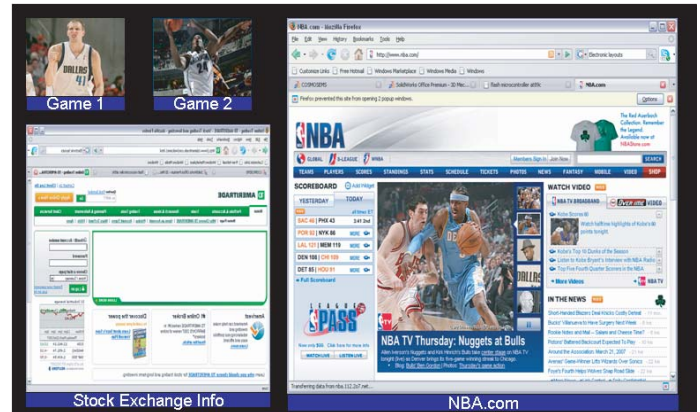
Set-Top Box 1080P Input

Computer 1080P Background Input

VCC-8002v - 2 auto-detect VGA / DVI (YPbPr)



VCC-8008c - 4 auto-detect VGA / DVI (YPbPr)
PLUS 4 auto-detect composite video (PAL / NTSC)



VCC-8004c - 2 auto-detect VGA / DVI (YPbPr)
PLUS 2 auto-detect composite video (PAL / NTSC)

HEADQUARTERS

Avitech International Corporation
 15333 NE 90th Street
 Redmond, WA 98052-3561
 USA
 Phone: +1 (425) 885 3863
 Toll Free: +1 (877) AVITECH (284-8324)
 Fax: +1 (425) 885-4726
 E-Mail: info@avitechvideo.com
 Press & Media: Delamere Marketing
admin@delameremarketing.com

© Copyright 2007 Avitech International Corporation. All Rights Reserved

Specifications subject to change without notice

www.avitechvideo.com

MONITORING MADE EASY™