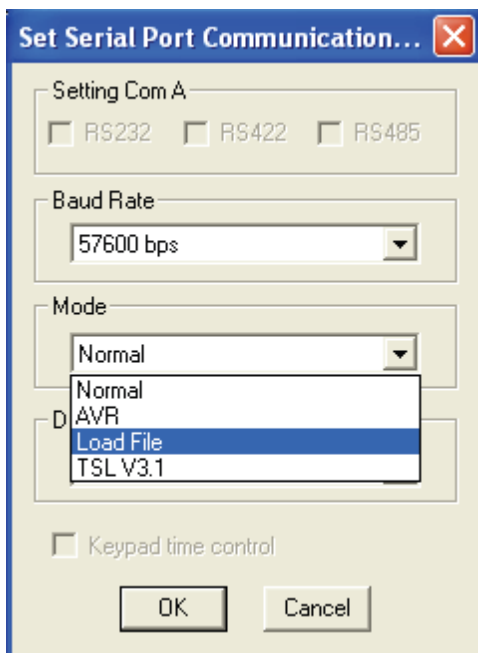


## SCP Configuration in Galaxy

Products: MCC-8004 Series, VCC-8000 Series, Rainier Series, MCC-8001 Series, ACC-8000 Series.

In Galaxy choose **Settings>Group Parameter>COM A**. When the next screen appears, select **Load File** on the **Mode** drop-down menu. Click **OK**.



- 1) You will be prompted to shutdown the Galaxy program and save to flash.
- 2) Power off the module by unplugging the power cord. Then plug in the SCP keypad to the rear panel's **Keypad** port.

**NOTE:** If you need to connect again using the Galaxy program, you must first disconnect the SCP keypad.

**The modules COM port is automatically set to the following parameters:**

RS-232

8-bit data

1-stop

No parity

9600 bps baud rate