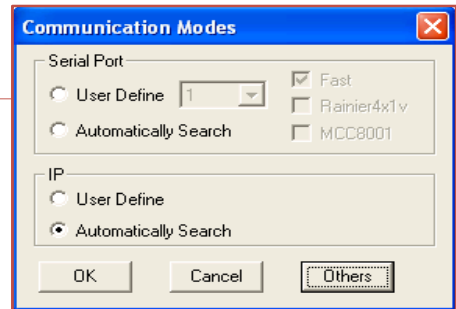


## Using Galaxy to change the Screen Logo

Products: MCC-8004 series

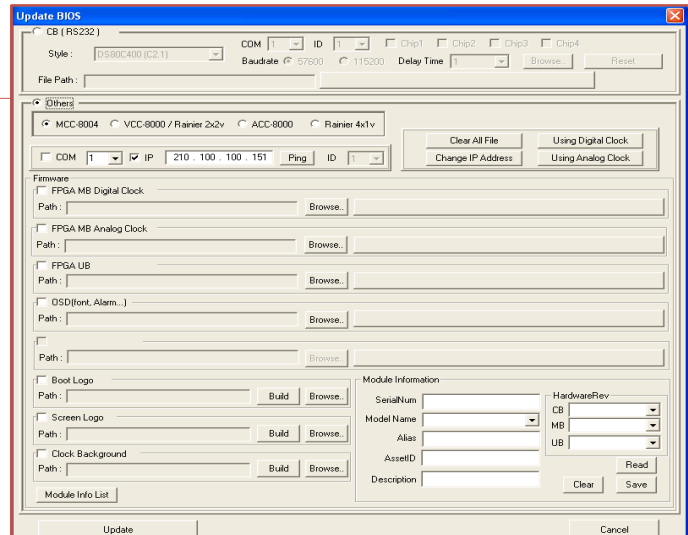
### Step 1

Start Galaxy. Communication Modes Window will open.



### Step 2

Select 'Others.' Update BIOS window will open



### Step 3

Select 'Others.'

### Step 4

If you are using a serial connection select 'com' and chose the com port number. If you are using IP, select IP and enter the correct IP address. Default IP is 210.100.100.210.

### Step 5

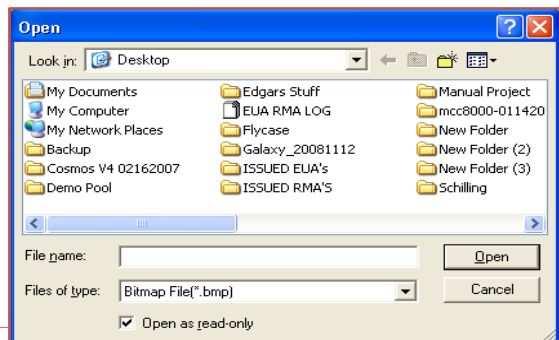
Select 'Screen Logo'

### Step 6

Select 'Build'

### Step 7

Select a .bmp 24 bit file to upload.



### Step 8

Select 'Update' and reset the module.