

Configuring Groups in Galaxy

Products: MCC-8004 Series, VCC-8000 Series, Rainier Series, MCC-8001 Series, ACC-8000 Series

Groups

Galaxy allows users to control up to fifteen cascaded modules. We recommend that users divide cascaded modules into groups based on the number of output displays connected to the system. (If you have four modules and two output displays, create two groups containing two modules each). By default Galaxy will combine all available modules into one large group, set as Group 1.

Step 1

Start Galaxy, and go to the Option Window.

Step 2

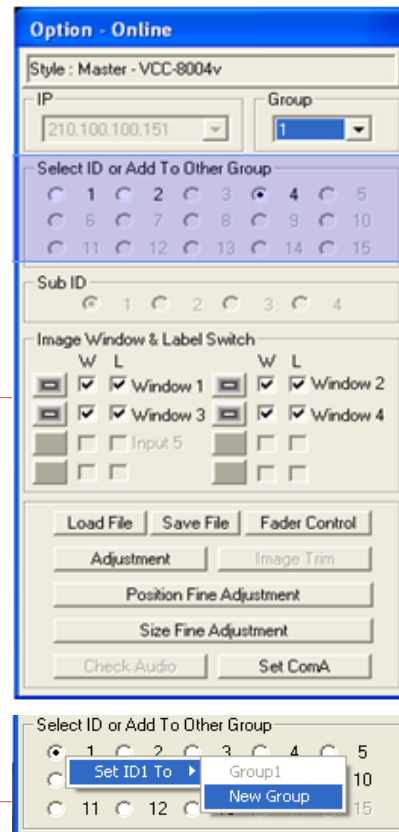
Under "Select ID or Add..." section highlighted in purple, right-click under a desired ID number (module) you would like to set to a different group.

Step 3

Select Set "Idx To", then select "New Group." The selected ID has now been set to a different group, on this case Group 2.

Step 4

The next ID (module) selected has the option of being set to Group 2, or to a new Group.



Step 5

To switch between the different groups use the Group drop down menu.

