

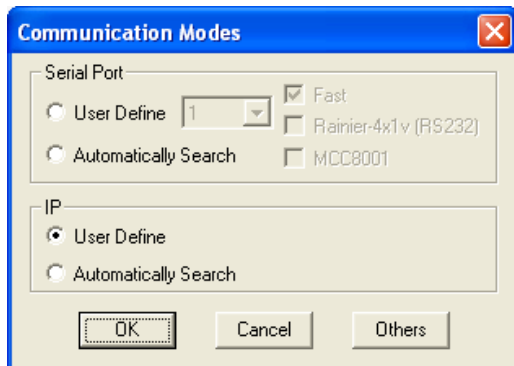
## Connecting to Galaxy via IP

Products: MCC-8004 Series, VCC-8000 Series, Rainier Series, MCC-8001 Series, ACC-8000 Series.

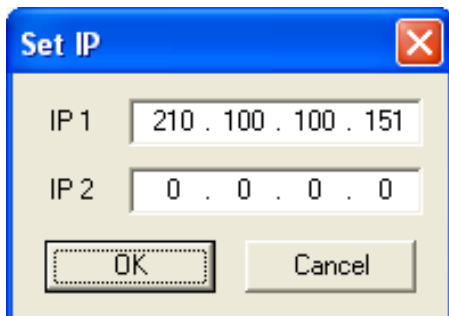
### Starting Galaxy Using IP

The Galaxy communication window allows users to choose the method of communication with the module. There are two ways to communicate with the module - IP and RS-232. When communicating with IP, please make sure that your computer is properly configured. For detailed instructions on how to set-up your computer/controller to communicate via IP please see the detailed steps at the end of this document.

1. Select **User Define** if you know the IP address of the module you are connecting. Otherwise, choose **Automatic Search** and allow Galaxy to recognize your module's IP address.



2. The default IP of the module is 210.100.100.151. Set IP 1 to match your current settings.



3. Once the module has been found, Galaxy will report the IP and ID/Type of module connected. Select **OK** to continue into Galaxy.

