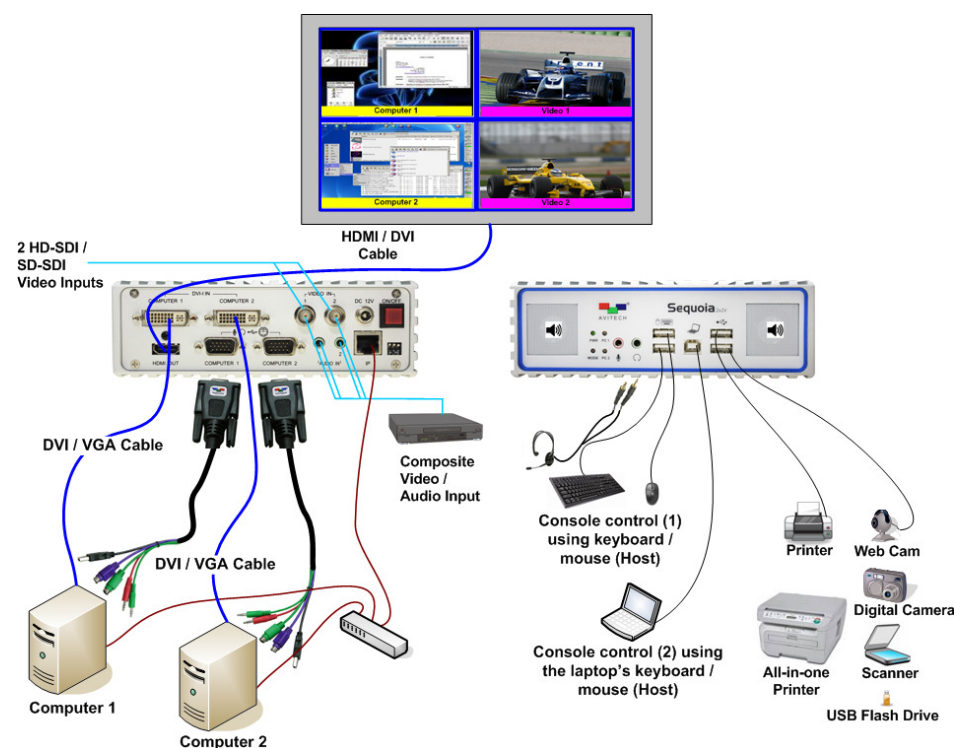


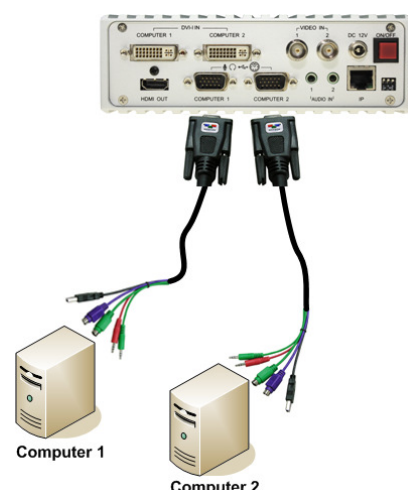
## 1 Setup the Sequoia-2x2V (The following figure shows a sample setup of an Avitech Sequoia connected to two computer systems and one laptop computer.)



**NOTE:** Two optional stands allow you to save space when using the Sequoia. Carefully slide the stands into the Sequoia, taking care to observe the correct orientation (the Sequoia side with the smooth flat surface "without grooves" should fit into the stand).



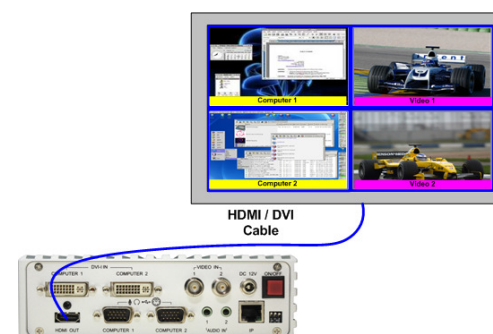
1. Connect one end of the Sequoia all-in-one cable to the **COMPUTER 1** connector on the rear panel. Connect the other end to the first computer system's USB or PS-2, and audio ports by matching the colors of the respective connector. Connect another Sequoia all-in-one cable to the **COMPUTER 2** connector on the rear panel and the other end to the second computer system's USB or PS-2, and audio ports.



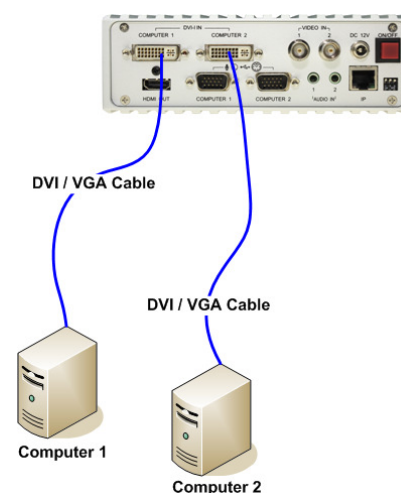
**IMPORTANT:** You are highly recommended to use the USB connection when available instead of the PS-2 connection. In case no USB connection is available and you have to use the PS-2 connection, make sure to first turn on power to your Sequoia (refer to a later step), then turn on power to your computer system afterwards.

**(For Windows 2000 users)** Upon connecting the USB device for the first time on your computer system, you may be required to perform the on-screen steps to be able to use the USB device.

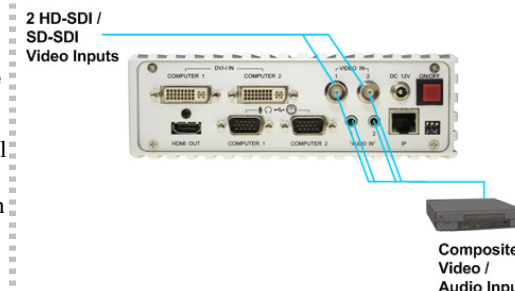
2. Connect the monitor display's DVI / HDMI signal cable (a DVI-to-HDMI converter may be required) to the Sequoia's **HDMI OUT** connector on the rear panel.



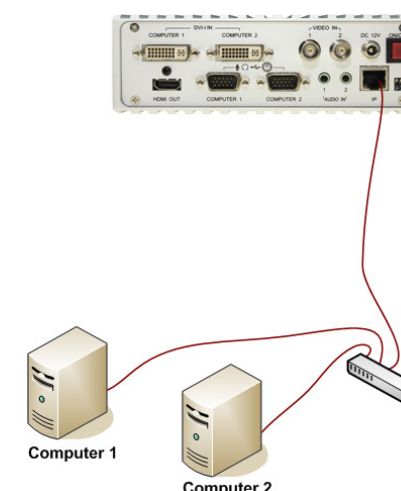
3. Connect one end of the DVI / VGA / YPbPr signal cable (a VGA-to-DVI converter may be required) to the **DVI-I IN COMPUTER 1** connector on the rear panel. Connect the other end to the first computer system's DVI / VGA port. Connect another DVI / VGA / YPbPr signal cable to the **DVI-I IN COMPUTER 2** connector on the rear panel and the other end to the second computer system's DVI / VGA port.



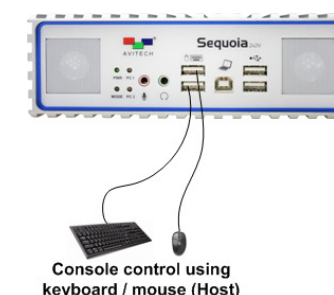
4. Connect the two HD-SDI / SD-SDI / composite signal cables to the **VIDEO IN 1** and **VIDEO IN 2** connectors; and the two audio signal cables to the respective **AUDIO IN 1** and **AUDIO IN 2** connectors on rear panel.



5. Connect the Ethernet cable from the **IP** port on the Sequoia's rear panel to the router. Connect one Ethernet cable from the router to the first computer and another Ethernet cable from the router to the second computer.



6. Connect the mouse and keyboard devices to the mouse and keyboard USB ports located on the Sequoia's front panel.



7. Connect one end of the 12 V DC power adapter to the Sequoia by turning the head to screw it securely.


**NOTE (for USA customers only):** Connect one end of the included AC power cord to the 12 V DC power adapter and the other end to a power outlet (make sure that power is available).

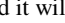
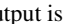
8. Press the power switch to the ON position. The image will be displayed on the monitor display.

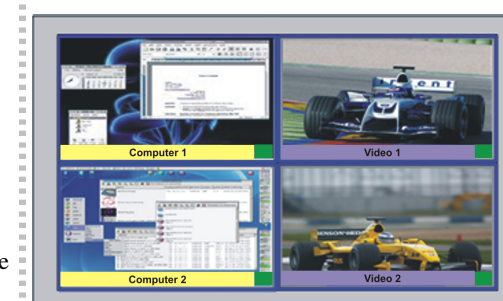
9. Turn on the power or re-boot the connected first / second computer systems at this time if you are using the PS-2 connection instead of the USB connection (refer to Step 1).

**NOTE:** There is no need to re-boot computer system(s) if you are using the USB connection (Plug-and-Play feature).

10. Move the mouse or press **Pause/Break** key and you will see the mouse pointer on the monitor display.

11. Move the mouse pointer to the window's top right portion of a particular computer and when the pop-up menu  appears, click the "⏏" symbol.

12. To enable audio output on any window, double-click the audio tally  and it will turn to  signifying that audio output is coming from a particular window.



**NOTE:** By default, the audio output would correspond to the active window. To enable audio output other than the active window, disable the item **Audio Output from Active Window** (remove checkmark) under **Settings→System Parameter→Sequoia Properties** in the Galaxy program (refer to chapter 3 of the User Manual for details).

Use the "**Ctrl + 0**" (mute) and "**←**" (decrease volume level) / "**→**" (increase volume level) hot keys for audio control.

## 2 Using the Remote Computer for Control

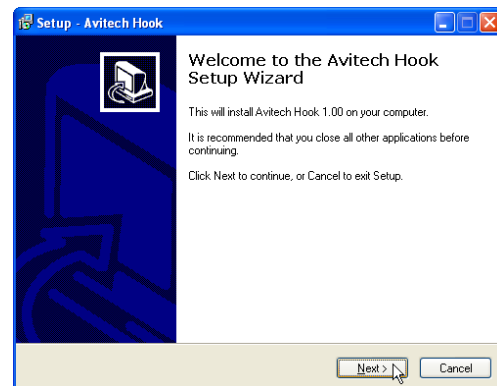
**NOTE:** In case you wish to use the remote computer for control (as opposed to directly connecting the mouse and keyboard to your Sequoia on Step 6), perform the following steps.

1. Connect the USB B-type connector end of the included USB-A to USB-B cable to the USB B-type connector on the Sequoia's front panel. Connect the cable's USB A-type connector end to the remote computer's USB port (make sure that the mouse and keyboard devices are connected properly to the remote computer).

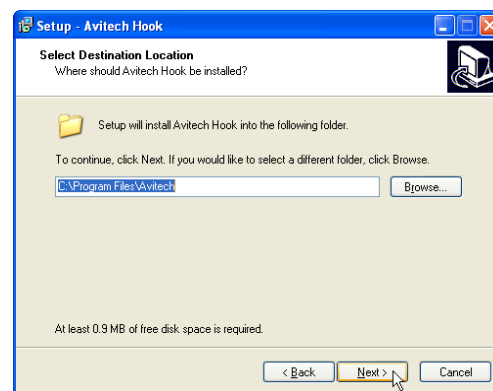


Console control using the laptop's keyboard / mouse (Host)

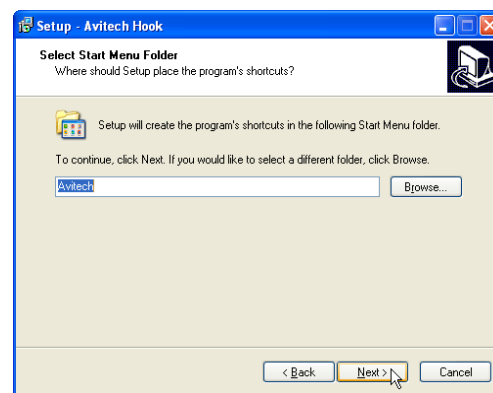
2. Copy the "Avitech Hook-1.00 setup.exe" on to your laptop computer's local hard drive.
3. Double-click the "Avitech Hook-1.00 setup.exe" and the **Avitech Hook Setup Wizard** screen appears. Click **Next** to continue.



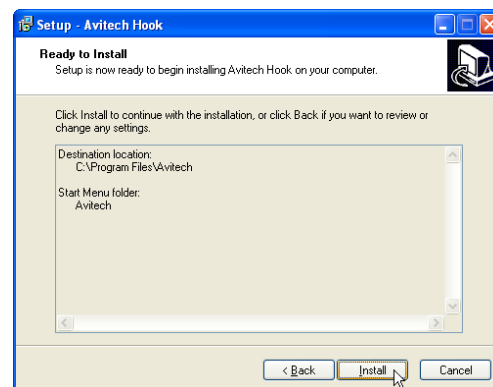
4. When the following screen appears, select the **Destination Location**. Then click **Next**.



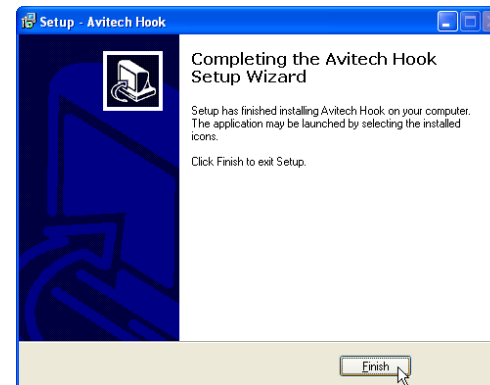
5. When the following screen appears, select the **Start Menu Folder**. Then click **Next** to continue.



6. When the following screen appears click **Install**.




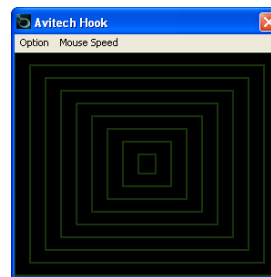
7. When the following screen appears click **Finish**.



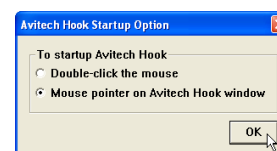
8. To start using the Hook software, click **Start** → **All Programs** → **Avitech** → **Avitech Hook** on your Windows desktop.



9. The  icon would appear on your Microsoft® Windows® system tray and the **Avitech Hook** window will appear onscreen to signify that you can startup the utility.



10. Click **Option** → **Startup Option** to select the method of starting-up the Hook software.



11. Use your preferred method and the following screen will appear.



12. Press the **Alt + Ctrl + Shift + F12** keys Or, slide the mouse to the right portion of the small window and when the monitor display icon appears, double-click the mouse's right button to exit the Avitech Hook software.

## 3 Operating Modes

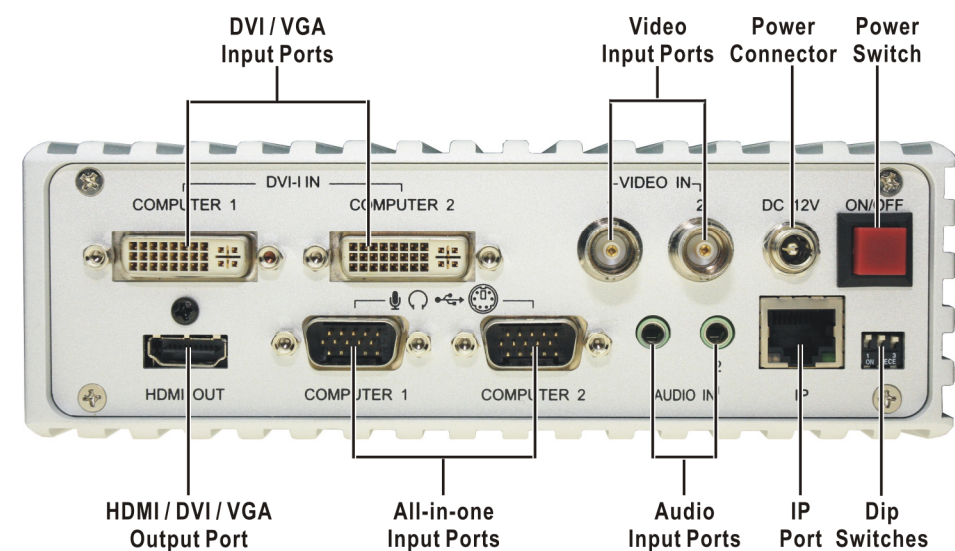
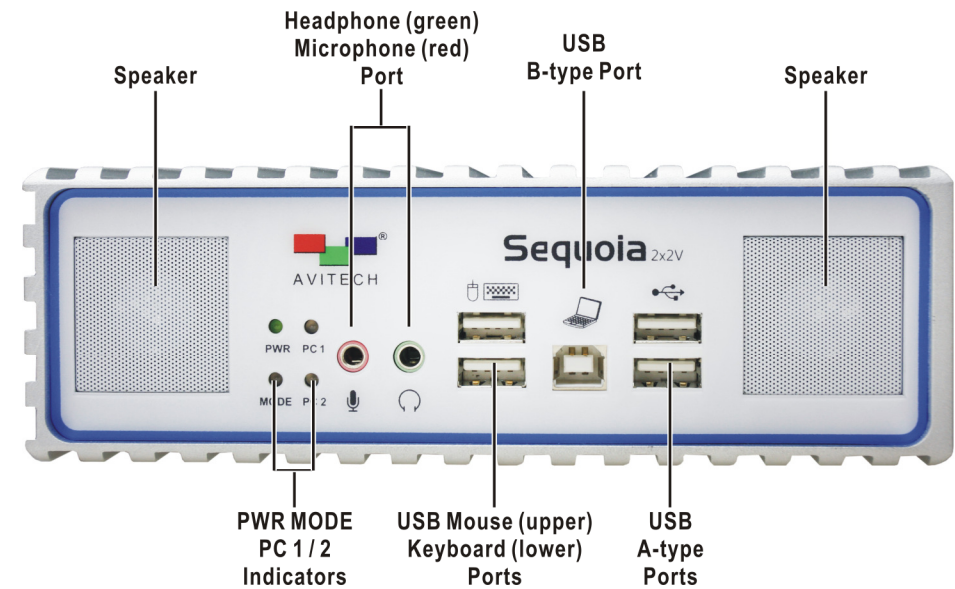
### Host Operation Mode

When the Sequoia is in the Host operation mode, the mouse cursor is controlled by a local mouse device connected to the master Sequoia device. There is a Host cursor to control all the position and size of up to two remote computers.

### Remote Operation Mode

When the Sequoia is in the Remote operation mode, the mouse cursor and keyboard is used to control a specific computer connected to the Sequoia.

## 4 Front / Rear Components







## 5 Using the Keyboard / Mouse

### Pop-up Selections


Move the host cursor to the top right corner of a window, the following pop-up selection appears:


On a computer window: 


On a video window: 


On a computer window in full screen mode:




On a video window in full screen mode: 

 : denotes swap window

 : denotes enter a computer window

 : denotes full screen

 : denotes return from full screen

### Using the Mouse

You can double-click the window of a particular computer you want to control.

#### Window Resizing –

Drag the border of a window to a desired size.



#### Window Repositioning –

Drag a window to a new position.


#### Window Swapping –

Move the host cursor to the top right corner of a window, select the capital letter **S**, and then click the left button. Move the host cursor (still a capital letter **S**) to destination window and click the left button.

#### Full Screen Window –

Move the host cursor to the top right corner of a window, select  then click the left button and the window will maximize to full screen mode. Again move the host cursor to the top right corner of a window, select  to return back from full screen mode.

#### Access a Remote Computer –

**Method 1:** Move the host cursor to the top right corner of a remote computer window, select  then click the left button. The newly accessed remote system will be displayed on the editing window.

**Method 2:** Double-click the mouse when the host cursor is on a remote computer window. The newly accessed remote system will be displayed on the editing window. The remote system that was just exited will be displayed in the window previously occupied by the newly switched remote system. From then on all mouse and keyboard inputs will be directed to that particular remote computer.

#### Lock / unlock Window Layout –

Move the host cursor to the top left corner of the display until the mouse pointer becomes a capital letter **L**, then click the left button and the window layout will be locked. Repeat the steps to return from the window layout locked mode.

#### Enable / disable Audio Output –

Double-click the audio tally  and it will turn to  to signify that audio output is coming from a particular window.

### Using the Keyboard

Use the following hot keys only in the host operation mode. The input letter is not case sensitive.

Keys	Function
<b>Ctrl + Esc</b>	Exit the Sequoia operation to perform setup using the Galaxy program.
<b>Ctrl + J</b>	Perform automatic video adjustment on the window where the host cursor is presently residing. Once in Automatic Video Adjustment mode following are two valid inputs: Automatic image adjustment. Automatic image gain adjustment. <b>NOTE:</b> This is possible only for VGA signal input source. For DVI signal input source, use the manual adjustment method via the Galaxy program.
<b>I</b> <b>G</b>	
<b>Ctrl + L</b>	Toggle lock / unlock keyboard and mouse while the user is away. The keyboard and mouse will become inoperable when locked.
<b>Ctrl + O</b>	Toggle muting the audio output on / off (mute).
<b>Ctrl + P</b>	Toggle a window on / off. Where <b>P</b> is the processor (window) number (e.g., <b>Ctrl + 1</b> would turn on / off <b>COMPUTER 1</b> window; <b>Ctrl + 2</b> would turn on / off <b>VIDEO IN 1</b> window; <b>Ctrl + 3</b> would turn on / off <b>COMPUTER 2</b> window; <b>Ctrl + 4</b> would turn on / off <b>VIDEO IN 2</b> window).
<b>Ctrl + R</b>	Toggle the lock window aspect ratio of 4:3, 16:9, and no lock for window where host cursor is currently on.
<b>Ctrl + S</b>	Save the latest preset to flash memory so that on the next boot-up the latest preset would be loaded.
<b>Ctrl + Y</b>	Redo up to ten undone actions.
<b>Ctrl + Z</b>	Undo up to ten previous actions.
<b>←</b>	Decrease the volume level.
<b>→</b>	Increase the volume level. <b>NOTE:</b> This ( <b>←</b> and <b>→</b> ) is not possible for controlling audio signal from <b>HDMI OUT</b> port of Sequoia to the monitor display's speakers.
<b>↑</b>	Load the previous user-created (via the Galaxy program <b>Option</b> menu's <b>Save File</b> button) preset file.
<b>↓</b>	Load the next user-created (via the Galaxy program <b>Option</b> menu's <b>Save File</b> button) preset file.

Keys	Function
<b>Alt + F#</b>	Load the user-created preset file (where <b>F#</b> is the function key and can be <b>F1</b> up to <b>F12</b> – maximum up to 12 via Galaxy software <b>Option</b> menu's <b>Save File</b> button).
<b>Alt + F</b>	Toggle a particular window's full screen mode on / off where the host cursor is currently residing.
<b>Alt + L</b>	Toggle lock / unlock window layout.
<b>Home</b>	When in full screen mode, toggle between full screen in foreground and full screen in background mode.
<b>Page Up / Down</b>	Switch between the three factory-default presets
<b>Shift + ←</b>	Decrease the audio delay time to achieve audio / video sync.
<b>Shift + →</b>	Increase the audio delay time to achieve audio / video sync. <b>NOTE:</b> This ( <b>Shift + ←</b> and <b>→</b> ) is possible only for audio signal outputted from the Sequoia's <b>HDMI OUT</b> connector.
<b>F#</b>	Access a remote system ( <b>F#</b> is the function key and can be <b>F1</b> or <b>F2</b> ). <b>F1</b> would correspond to <b>COMPUTER 1</b> window; <b>F2</b> would correspond to <b>COMPUTER 2</b> window. Newly accessed remote system will be displayed on the editing window. Remote system that was just exited will be displayed in the window previously occupied by the newly switched remote system. You can only access a remote system from the screen where it is displayed. <b>NOTE:</b> You can also double-click the mouse for the same effect.
<b>Shift + F#</b>	Access a remote system ( <b>F#</b> is the function key and can be <b>F1</b> or <b>F2</b> ). <b>F1</b> would correspond to <b>COMPUTER 1</b> window; <b>F2</b> would correspond to <b>COMPUTER 2</b> window. You can only access a remote system from the screen where it is displayed. <b>NOTE:</b> You can also hold <b>Shift</b> and then double-click the mouse for same effect.
<b>Shift + O</b>	Switch audio output between the Sequoia's speakers and <b>HDMI OUT</b> port to monitor display's speakers. <b>NOTE:</b> This is not possible when connecting the Sequoia's <b>HDMI OUT</b> connector to the monitor display via a DVI-to-HDMI converter.
<b>Tab</b>	Move the host cursor from one screen to the other.

**NOTE:** Pressing the **Ctrl + Esc** hot key as well as the "Load Preset" action will clear the undo (**Ctrl + Z**) / redo (**Ctrl + Y**) list in memory.

Use the following hot keys only in the remote operation mode.

Key	Function
<b>Pause Break</b>	Exit from the remote operation mode to the host operation mode.
<b>Ctrl + Esc</b>	Exit Sequoia operation to perform setup using the Galaxy program.
<b>Ctrl + Shift + Alt + V</b>	Run the Microsoft® Notepad program, and then press <b>Ctrl + Shift + Alt + V</b> to read the Sequoia firmware version. <b>NOTE:</b> This is possible only if the computer and Sequoia is connected via the all-in-one cable's USB port.
<b>Ctrl + Pause Break</b> or <b>Shift + Pause Break</b>	Switch control (cycle) from Computer 1→Computer 2→Computer 1, and so forth. <b>NOTE:</b> Controlling function is available only if the computer and Sequoia is connected via the all-in-one cable. <b>Example 1:</b> If the Sequoia is connected to two (2) computers via the all-in-one cables, then hotkey switching would be from Computer 1→Computer 2→Computer 1, and so forth. <b>Example 2:</b> If the Sequoia is connected to a computer via the all-in-one cable and Computer 2 connector has no connection, then hotkey switching would be from Computer 1→blank window (mouse cursor will not be shown)→Computer 1, and so forth. <b>CAUTION:</b> Make sure to press <b>Ctrl</b> or <b>Shift</b> key first because <b>Pause/Break</b> key would cause system to exit from the Remote operation mode to the Host operation mode.

**NOTE:** When using a MacBook computer, use **control + option (Alt) + shift + k** to perform Host / Remote mode switch because there is no **Pause/Break** key.

The Sequoia-2U2V is compatible with the following operating systems:

**Windows OS:** 98 Special Edition, 2000 Professional, XP, Vista, Server 2003, Server 2008, Windows 7.  
**Linux OS:** Fedora 10, Ubuntu 8.1, Scientific 5.2, RedHat, Mint 6.0, Debian 5.0, PC Linux OS 2009, SUSE 11.1, Mandriva 2009, CentOS 5.2  
**Mac OS:** O/S X 10.5 or later version only.

**NOTE:** Windows NT is currently not supported.