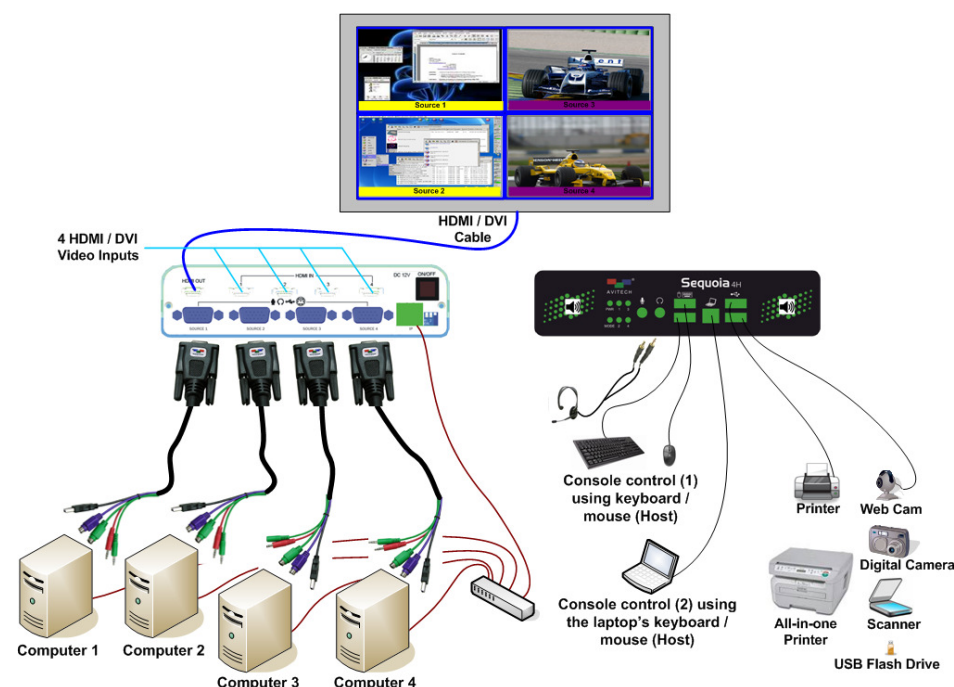
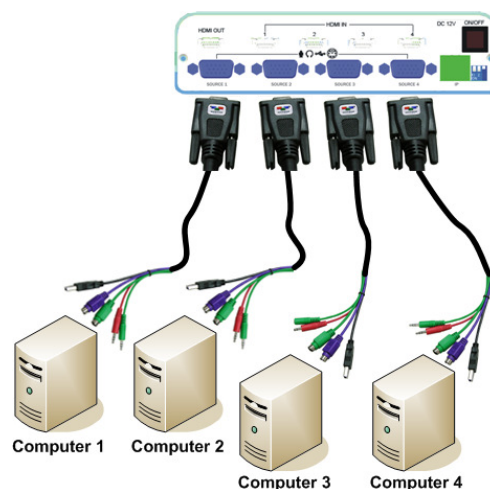


1 Setup the Sequoia-4H (The following figure shows a sample setup of an Avitech Sequoia connected to four computer systems and one laptop computer.)

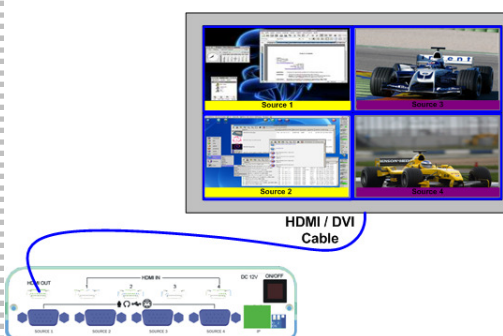


1. Connect one end of the Sequoia all-in-one cable to the **SOURCE 1** connector on the rear panel. Connect the other end to the first computer system's USB or PS-2, and audio ports by matching the colors of the respective connector. Connect another Sequoia all-in-one cable to the **SOURCE 2 / 3 / 4** connectors on the rear panel and the other end to the second / third / fourth computer system's USB or PS-2, and audio ports.

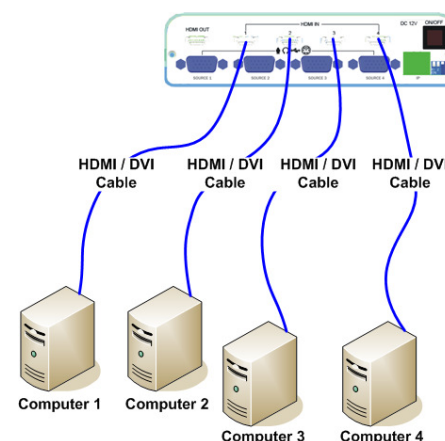


IMPORTANT: You are highly recommended to use the USB connection when available instead of the PS-2 connection. In case no USB connection is available and you have to use the PS-2 connection, make sure to first turn on power to your Sequoia (refer to a later step), then turn on power to your computer system afterwards. **(For Windows 2000 users)** Upon connecting the USB device for the first time on your computer system, you may be required to perform the on-screen steps to be able to use the USB device.

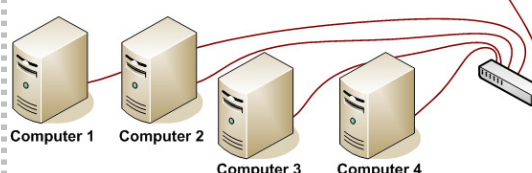
2. Connect the monitor display's HDMI / DVI signal cable (a DVI-to-HDMI converter may be required) to the Sequoia's **HDMI OUT** connector on the rear panel.



3. Connect one end of the HDMI / DVI signal cable (a DVI-to-HDMI converter may be required) cable to the **HDMI IN 1** connector on the rear panel. Connect the other end to the first computer system's HDMI / DVI port. Connect another HDMI / DVI signal cable to the **HDMI IN 2** connector on the rear panel and the other end to the second computer system's HDMI / DVI port. Do the same for the third and fourth computer.



4. Connect the Ethernet cable from the **IP** port on the Sequoia's rear panel to the router. Connect one Ethernet cable from the router to the first computer, another Ethernet cable from the router to the second computer, another Ethernet cable from the router to the third computer, and another Ethernet cable from the router to the fourth computer.



5. Connect the mouse and keyboard devices to the mouse and keyboard USB ports located on the Sequoia's front panel.


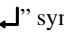
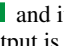
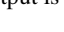


6. Connect one end of the 12 V DC power adapter to the Sequoia by turning the head to screw it securely.

NOTE (for USA customers only): Connect one end of the included AC power cord to the 12 V DC power adapter and the other end to a power outlet (make sure that power is available).

7. Press the power switch to the ON position. The image will be displayed on the monitor display.
8. Turn on the power or re-boot the connected first / second / third / fourth computer systems at this time if you are using the PS-2 connection instead of the USB connection (refer to Step 1).

NOTE: There is no need to re-boot computer system(s) if you are using the USB connection (Plug-and-Play feature).

9. Move the mouse or press **Pause/Break** key and you will see the mouse pointer on the monitor display.
10. Move the mouse pointer to the window's top right portion of a particular computer and when the pop-up menu  appears, click the  symbol.
11. To enable audio output on any window, double-click the audio tally  and it will turn to  signifying that audio output is coming from a particular window.



NOTE: By default, the audio output would correspond to the active window. To enable audio output other than the active window, disable the item **Audio Output from Active Window** (remove checkmark) under **Settings→System Parameter→Sequoia Properties** in the Galaxy program (refer to chapter 3 of the User Manual for details).

Use the "**Ctrl + O**" (mute) and "**←**" (decrease volume level) / "**→**" (increase volume level) hot keys for audio control.

IMPORTANT (when using the Sequoia with Mac OS):

- Before using the Sequoia you need to enable the following – **System Preference→(System) Universal Access→Enable access for assistive devices.** Otherwise, only the mouse will function properly; the keyboard may not work.
- We also recommend that you enable the following: **System Preference→(Hardware) Keyboard→Use all F1, F2, etc. keys as standard function keys.** So that the function of F1, F2 ... F12 will have their intended function. If not enabled, then pressing these keys will have no effect. Another solution will be to press the Fn key first before pressing F1, F2 ... F12.

2 Using the Remote Computer for Control

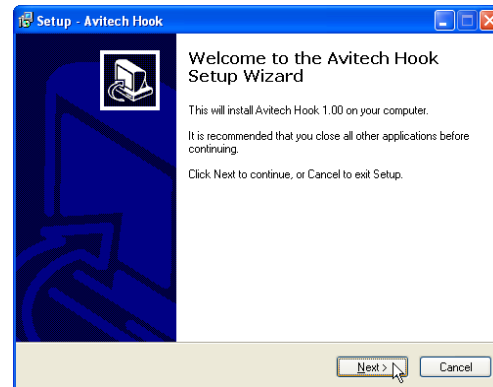
NOTE: In case you wish to use the remote computer for control (as opposed to directly connecting the mouse and keyboard to your Sequoia on Step 5), perform the following steps.

1. Connect the USB B-type connector end of the included USB-A to USB-B cable to the USB B-type connector on the Sequoia's front panel. Connect the cable's USB A-type connector end to the remote computer's USB port (make sure that the mouse and keyboard devices are connected properly to the remote computer).

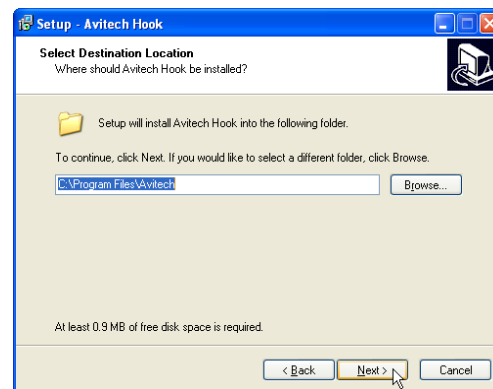


Console control using the laptop's keyboard / mouse (Host)

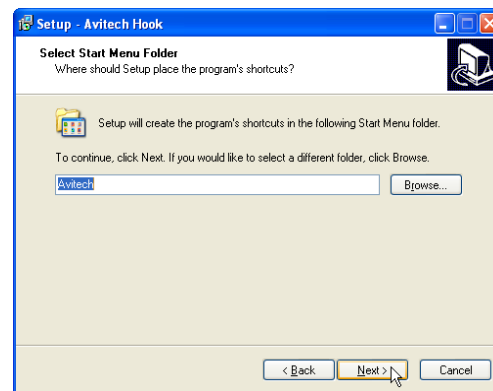
2. Copy the "Avitech Hook-1.00 setup.exe" on to your laptop computer's local hard drive.
3. Double-click the "Avitech Hook-1.00 setup.exe" and the **Avitech Hook Setup Wizard** screen appears. Click **Next** to continue.



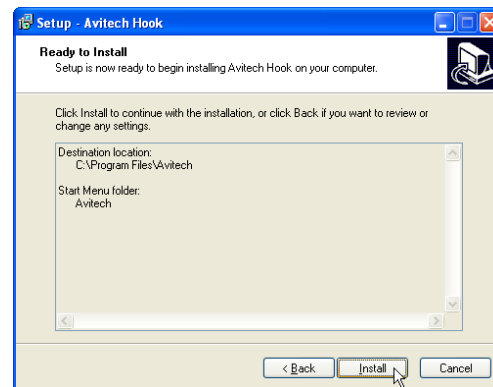
4. When the following screen appears, select the **Destination Location**. Then click **Next**.



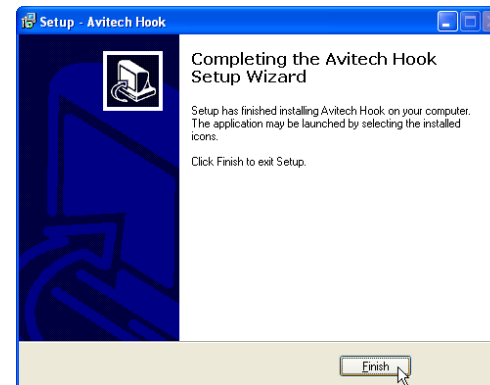
5. When the following screen appears, select the **Start Menu Folder**. Then click **Next** to continue.



6. When the following screen appears click **Install**.




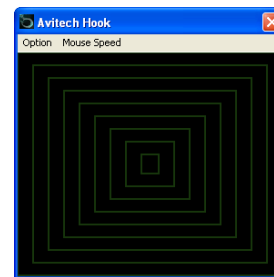
7. When the following screen appears click **Finish**.



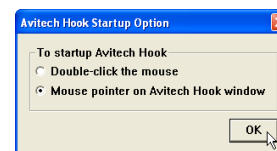
8. To start using the Hook software, click **Start** → **All Programs** → **Avitech** → **Avitech Hook** on your Windows desktop.



9. The  icon would appear on your Microsoft® Windows® system tray and the **Avitech Hook** window will appear onscreen to signify that you can startup the utility.



10. Click **Option** → **Startup Option** to select the method of starting-up the Hook software.



11. Use your preferred method and the following screen will appear.



12. Press the **Alt + Ctrl + Shift + F12** keys Or, slide the mouse to the right portion of the small window and when the monitor display icon appears, double-click the mouse's right button to exit the Avitech Hook software.

3 Operating Modes

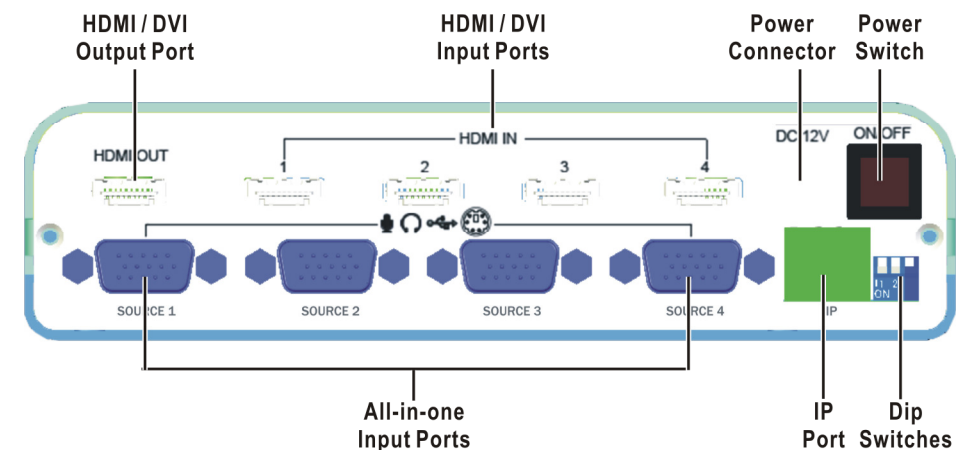
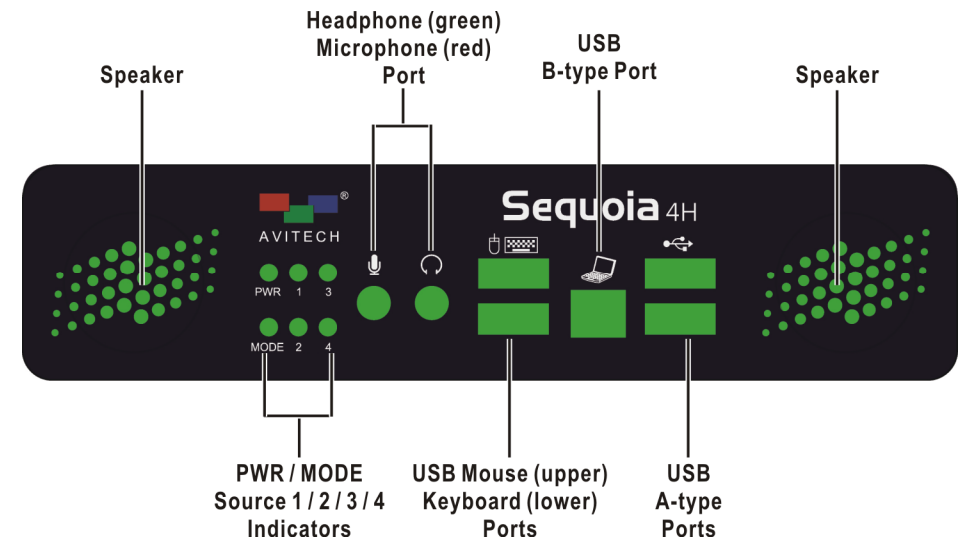
Host Operation Mode

When the Sequoia is in the Host operation mode, the mouse cursor is controlled by a local mouse device connected to the master Sequoia device. There is a Host cursor to control all the position and size of up to two remote computers.

Remote Operation Mode

When the Sequoia is in the Remote operation mode, the mouse cursor and keyboard is used to control a specific computer connected to the Sequoia.


4 Front / Rear Components




5 Using the Keyboard / Mouse

Pop-up Selections


Move the host cursor to the top right corner of a window, the following pop-up selection appears:


On a computer window: 


On a video window: 


On a computer window in full screen mode:




On a video window in full screen mode: 

 : denotes swap window

 : denotes enter a computer window

 : denotes full screen

 : denotes return from full screen

Using the Mouse

You can double-click the window of a particular computer you want to control.

Window Resizing –

Drag the border of a window to a desired size.



Window Repositioning –

Drag a window to a new position.


Window Swapping –

Move the host cursor to the top right corner of a window, select the capital letter **S**, and then click the left button. Move the host cursor (still a capital letter **S**) to destination window and click the left button.

Full Screen Window –

Move the host cursor to the top right corner of a window, select  then click the left button and the window will maximize to full screen mode. Again move the host cursor to the top right corner of a window, select  to return back from full screen mode.

Access a Remote Computer –

Method 1: Move the host cursor to the top right corner of a remote computer window, select  then click the left button. The newly accessed remote system will be displayed on the editing window.

Method 2: Double-click the mouse when the host cursor is on a remote computer window. The newly accessed remote system will be displayed on the editing window. The remote system that was just exited will be displayed in the window previously occupied by the newly switched remote system. From then on all mouse and keyboard inputs will be directed to that particular remote computer.

Lock / unlock Window Layout –

Move the host cursor to the top left corner of the display until the mouse pointer becomes a capital letter **L**, then click the left button and the window layout will be locked. Repeat the steps to return from the window layout locked mode.

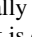
Enable / disable Audio Output –

Double-click the audio tally  and it will turn to  to signify that audio output is coming from a particular window.

Using the Keyboard

Use the following hot keys only in the host operation mode. The input letter is not case sensitive.

Keys	Function
Ctrl + Esc	Exit the Sequoia operation to perform setup using the Galaxy program.
Ctrl + L	Toggle lock / unlock keyboard and mouse while the user is away. The keyboard and mouse will become inoperable when locked.
Ctrl + O	Toggle muting the audio output on / off (mute).
Ctrl + P	Toggle a window on / off. Where P is the processor (window) number (e.g., Ctrl + 1 would turn on / off Source 1 window; Ctrl + 2 would turn on / off Source 2 window; Ctrl + 3 would turn on / off Source 3 window; Ctrl + 4 would turn on / off Source 4 window).
Ctrl + R	Toggle the lock window aspect ratio of 4:3, 16:9, and no lock for window where host cursor is currently on.
Ctrl + S	Save the latest preset to flash memory so that on the next boot-up the latest preset would be loaded.
Ctrl + Y	Redo up to ten undone actions.
Ctrl + Z	Undo up to ten previous actions.
←	Decrease the volume level.
→	Increase the volume level.
↑	Load the previous user-created (via the Galaxy program Option menu's Save File button) preset file.
↓	Load the next user-created (via the Galaxy program Option menu's Save File button) preset file.
Alt + F#	Load the user-created preset file (where F# is the function key and can be F1 up to F12 – maximum up to 12 via Galaxy software Option menu's Save File button).
Alt + F	Toggle a particular window's full screen mode on / off where the host cursor is currently residing.
Alt + L	Toggle lock / unlock window layout.

Keys	Function
F#	Access a remote system (F# is the function key and can be F1 , F2 , F3 , or F4). F1 would correspond to Source 1 window; F2 would correspond to Source 2 window, F3 would correspond to Source 3 window, F4 would correspond to Source 4 window. Newly accessed remote system will be displayed on the editing window. Remote system that was just exited will be displayed in the window previously occupied by the newly switched remote system. You can only access a remote system from the screen where it is displayed. NOTE: You can also double-click the mouse for the same effect.
Home	When already in full screen mode, toggle between full screen in foreground and full screen in background mode.
Page Up / Down	Switch between the three factory-default presets
Shift + ←	Decrease the audio delay time to achieve audio / video sync.
Shift + →	Increase the audio delay time to achieve audio / video sync.
Shift + F#	Access a remote system (F# is the function key and can be F1 , F2 , F3 , or F4). F1 would correspond to Source 1 window; F2 would correspond to Source 2 window, F3 would correspond to Source 3 window, F4 would correspond to Source 4 window. You can only access a remote system from the screen where it is displayed. NOTE: You can also hold Shift and then double-click the mouse for same effect.
Shift + I	Switch the audio input source between HDMI IN and SOURCE ports (the audio tally  will signify that audio output is coming from a particular window).
Shift + O	Switch audio output between the Sequoia's speakers and HDMI OUT port to monitor display's speakers. NOTE: This is not possible when connecting the Sequoia's HDMI OUT connector to the monitor display via a DVI-to-HDMI converter.
Tab	Move the host cursor from one screen to the other.

NOTE: Pressing the **Ctrl + Esc** hot key as well as the "Load Preset" action will clear the undo (**Ctrl + Z**) / redo (**Ctrl + Y**) list in memory.

Use the following hot keys only in the remote operation mode.

Key	Function
Pause Break	Exit from the remote operation mode to the host operation mode.
Ctrl + Esc	Exit Sequoia operation to perform setup using the Galaxy program.
Ctrl + Shift + Alt + V	Run the Microsoft® Notepad program, and then press Ctrl + Shift + Alt + V to read the Sequoia firmware version. NOTE: This is possible only if the computer and Sequoia is connected via the all-in-one cable's USB port.
Ctrl + Pause Break	Switch control (cycle) from window 1→window 2→window 3→window 4→window 1, and so forth. NOTE: Controlling function is available only if the computer and Sequoia is connected via the all-in-one cable. Example 1: If the Sequoia is connected to four (4) computers via the all-in-one cables, then hotkey switching would be from computer 1→ computer 2→ computer 3→computer 4→computer 1, and so forth. Example 2: If Source 1 and Source 3 connectors are connected to two (2) computers via the all-in-one cables, Source 2 and HDMI IN 2 connectors has no connection, and Source 4 connector has no connection but HDMI IN 4 connector is connected to a DVD player, then hotkey switching would be from computer 1→blank window 2 (mouse cursor will not be shown)→computer 3 →DVD player input source (mouse cursor will not be shown and no control is possible in this Remote mode)→ computer 1, and so forth.
Shift + Pause Break	Switch control backward (cycle) from window 1→window 4→ window 3→window 2→window 1, and so forth. NOTE: Example 1 and Example 2 in the above illustration is also applicable for this hotkey.

NOTE: When using a MacBook computer, use **control + option (Alt) + shift + k** to perform Host / Remote mode switch because there is no **Pause/Break** key.

The Sequoia-4H is compatible with the following operating systems:
Windows OS: 98 Special Edition, 2000 Professional, XP, Vista, Server 2003, Server 2008, Windows 7.
Linux OS: Fedora 10, Ubuntu 8.1, Scientific 5.2, RedHat, Mint 6.0, Debian 5.0, PC Linux OS 2009, SUSE 11.1, Mandriva 2009, CentOS 5.2
Mac OS: O/S X 10.5 or later version only.

NOTE: Windows NT is currently not supported.