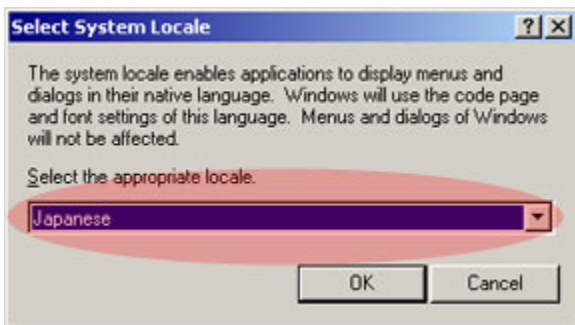
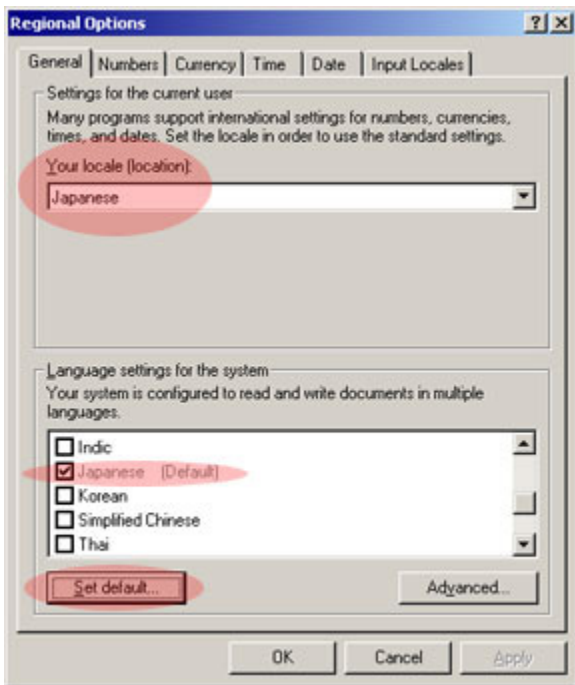


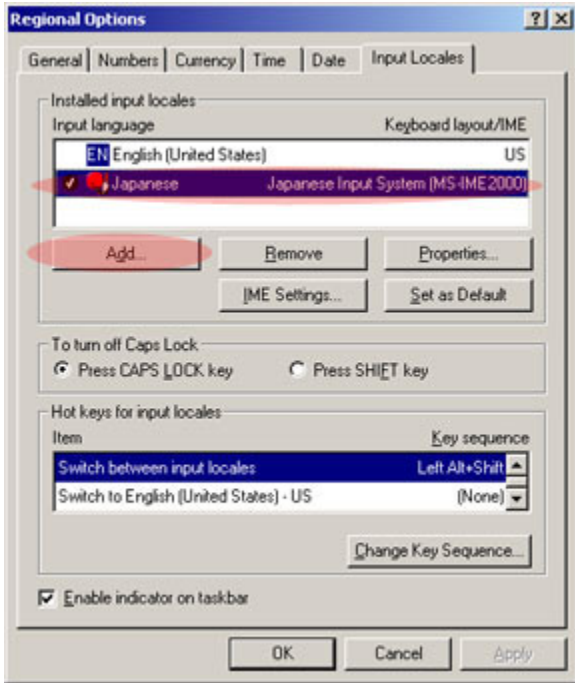
Adding Asian Fonts

All MCC-MVP controllers are shipped with language options turned on for Chinese (Simplified), Chinese (Traditional), Japanese, and Korean. You still need to add the specific Input Locale you need in order to type that language in Windows based programs. To type labels in an Asian language, you need to first change the input locale in Windows and then change the font properties in Cosmos. Follow the directions below to add type Asian languages in your label.

To Add a New Input Locale:

1. Double click on **My Computer**.
2. Double click on **Control Panel**.
3. Double click on **Regional Options**.
4. Select **General** tab.
5. Under **Your locale (location)**, select the target language.
6. Under **Language settings for the system**, select the target language.
7. Select **Set default** and then choose the appropriate locale.
8. You may be prompted to reboot Windows 2000.
9. After the controller reboots, return to the **Regional Options** menu.
10. Select **Input Locales** tab.
11. Select **Add** under Input Language.
12. Under **Input locale**: select the language you want to use.
13. Select **OK** to add the new language and close the Add Input Locale menu.
14. If you would like the new input language to be the default





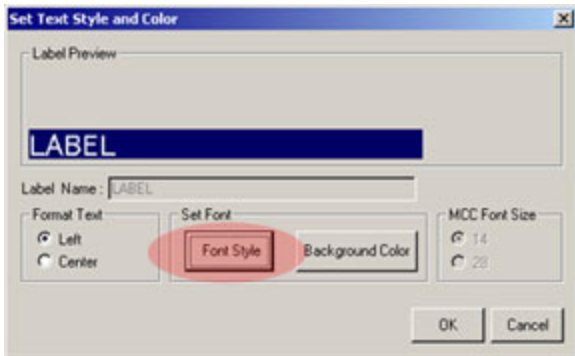
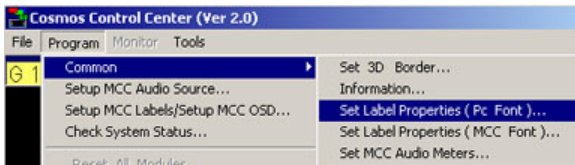
language, select the language and **Set as Default**.

15. Select **Apply** to finalize the changes and **OK** to exit the Regional Options menu.

After doing this, you should see the language icon in the Windows 2000 Task Bar. The default language is selected. You can switch between keyboard layouts by selecting **ALT+~**.

Setting the Font in Cosmos:

1. Start up Cosmos as usual.
2. From the Cosmos Control Center, select **Program—Common—Set Label Properties (PC Font)**.
3. Under **Font**, select the correct font that corresponds to your target language.
4. Under **Script**, select the correct target language.
5. Change any other font features such as style or size.
6. Select **OK** to finalize changes.



Now you can start enter labels in your native language. Please keep in mind that this feature only works if you have an Avitech controller with your system.

