



Resetting a Module

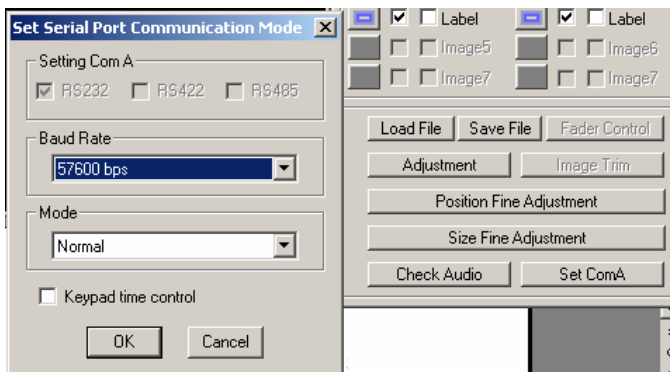
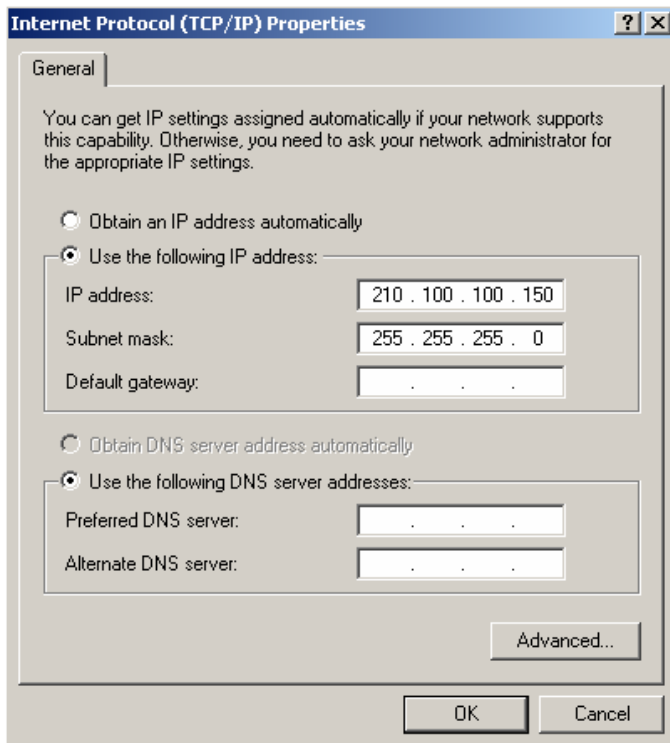
This informative document will explain the procedure to reset a module and configure it as you had it before. This procedure must be followed if the master module in a group is replaced, especially if the IP address or baud rate was changed.

Steps

1. Reset the module
2. Reconfigure the module using Galaxy
3. Discover the module using Cosmos
4. Save all information

Resetting the Module

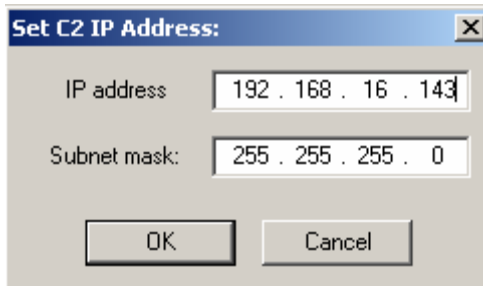
1. If the module is the first in the group and is connected to an Ethernet hub or other modules, disconnect the module from the hub and also disconnect the RS485 looping cables to slave modules
2. Power off the unit and located the two white dip switches to the left of the rotary dial
3. Flip both dip switches down and then power on the unit



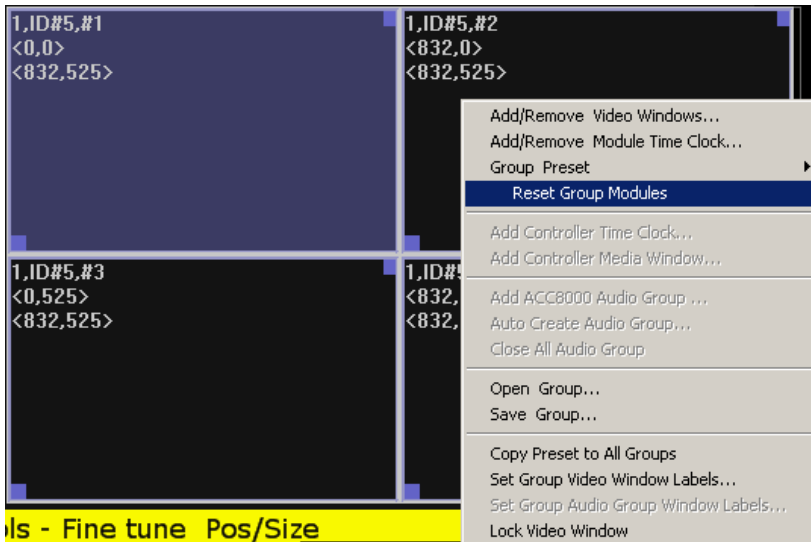
4. Power off the unit and flip both dip switches back up
5. Power on the unit and you are done

Reconfiguring the Module with Galaxy

1. Perform this step only if you reset the master (First) module in the group, if you reset the slave module, proceed with the next section
2. Load Galaxy to a PC or laptop and use an Ethernet cable to connect the PC directly to the IP port on the module
3. Change the IP address of the PC to 210.100.100.150
4. Run Galaxy by double clicking on the executable
5. Select User Key In IP and enter 210.100.100.151 (Default IP address of the module)
6. Once inside Galaxy, select Set Com A from the option menu and then choose the baud rate and then set Mode to Normal if using ASCII
7. Select OK to finalize changes and you will receive a warning message, do not worry about this yet
8. Set the IP address of the module to what you want it to be (e.g.

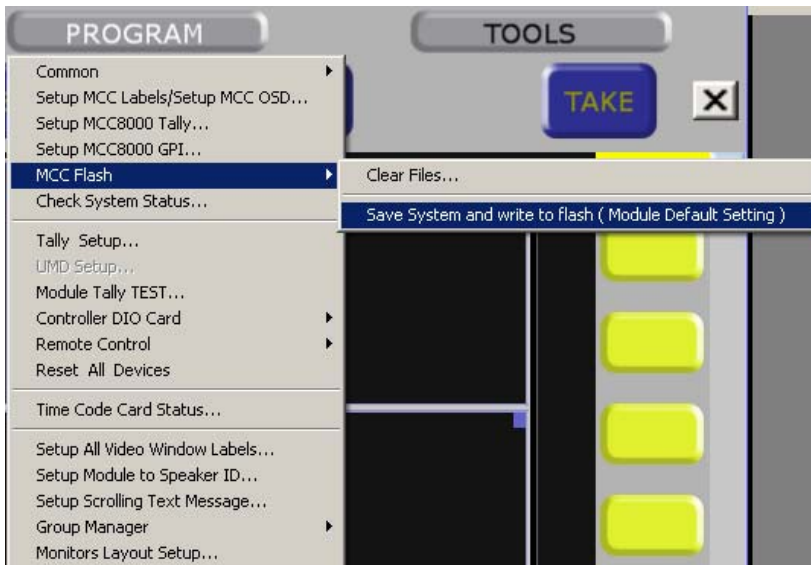


- 192.168.16.143) by selecting Settings—Module Parameter—IP Address
9. Under IP address enter in the new IP address and leave the subnet mask at 255.255.255.0
10. Select OK and you will receive a warning message, select OK to continue
11. To save your changes, close Galaxy and select Yes when prompted to save
12. Power cycle the module
13. Test the new settings by changing the IP address of your computer to match the module (e.g. 192.168.16.150)
14. Launch Galaxy and select User Key In IP
15. Enter the new IP address (e.g. 192.168.16.143) and select OK to continue
16. If Galaxy detects your module, close Galaxy and move on to the next section
17. If you have multiple modules in the group, connect the RS485 Ethernet looping cable and then try connecting with Galaxy
18. Make sure it detects all your modules and once you have verified this, close Galaxy



Discovering the Module with Cosmos

1. Connect the master module back into the Ethernet hub if it was disconnected in the first section
2. Run Cosmos and make sure it detects all the modules in the system
3. Continue into Cosmos control center
4. Select the group with the module you just changed and select Reset Group from the group menu
 - a. To access the group menu, right click on a window and select Open Group Menu
5. If you reset multiple groups, apply to all the groups that are affected



Saving all Information

1. To save all settings in Cosmos, select Program—MCC Flash—Save System and Write to Flash
2. This process may take several minutes if you have many modules (e.g. 25 or more)
3. You can also Save all Information by closing Cosmos and select Save All when prompted

4. After closing Cosmos, make sure everything was saved by power cycling all the units and restarting Cosmos

Troubleshooting

If you have multiple modules in a single group and you reset one of them, the output may get screwed up. It will all come back after you reset the group modules in Cosmos. If the output goes to sleep, reseat the DVI connect on either end to re-sync the display with the module.

If Cosmos fails to detect a module during the startup process, power cycle the module and try again.

Technical Support

If you have any questions regarding the information provided in this guide, please call our technical support line at 425-885-3863 or our toll free line at 1-877-AVI-TECH.

To contact the author of this document, please send an email to Thomas@avitechvideo.com.