



RAINIER 4X1V/8X1V/12X1V/16X1V SERIES

USING THE DVI-I INPUT AS
A VIDEO OVERLAY SOURCE

Rainier 4a1v/4d1v



Software Version:

Galaxy V3.11 dated 06.04.2009 or later.

Objective:

The purpose of this exercise is to show the **DVI-I Input** image with the message **Camera 1 live video feed** (in white text) as a caption above the **Input 2** window.





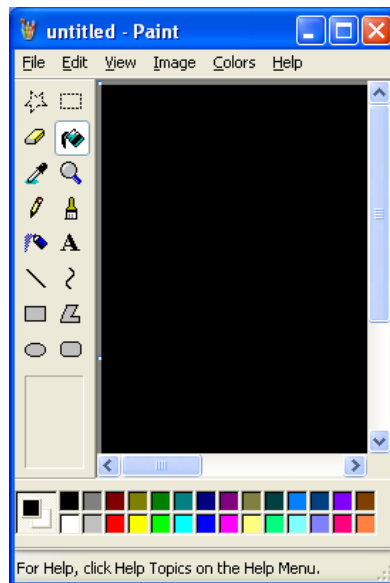
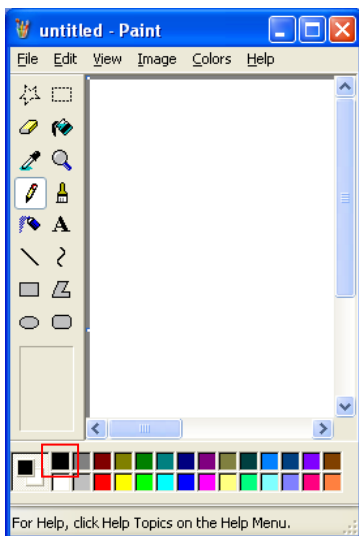
Hardware Setup:

1. For the Rainier that will be connected to the DVI source, set the **Rotary ID** on the rear panel of the module to **0**.
2. Connect the DVI source from the PC to the Rainier's **DVI-I Input** port (on rear panel).

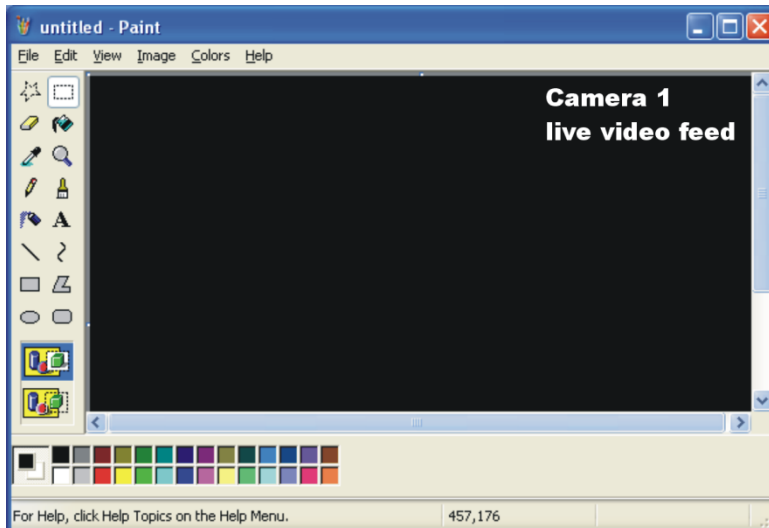
Creating an Overlay:

For this example, we will use Microsoft® Paint on the PC to create a DVI source overlay image.

Begin by choosing black as your background color.



1. Set the attributes of your image to match the size of your desktop display properties (Image>Attributes>width + height)
2. Type the caption/text that you wish to be viewed in the video overlay. (De-select Draw Opaque in Image Settings).



3. Go to View>View Bitmap. This will preview the image full screen on your PC monitor.



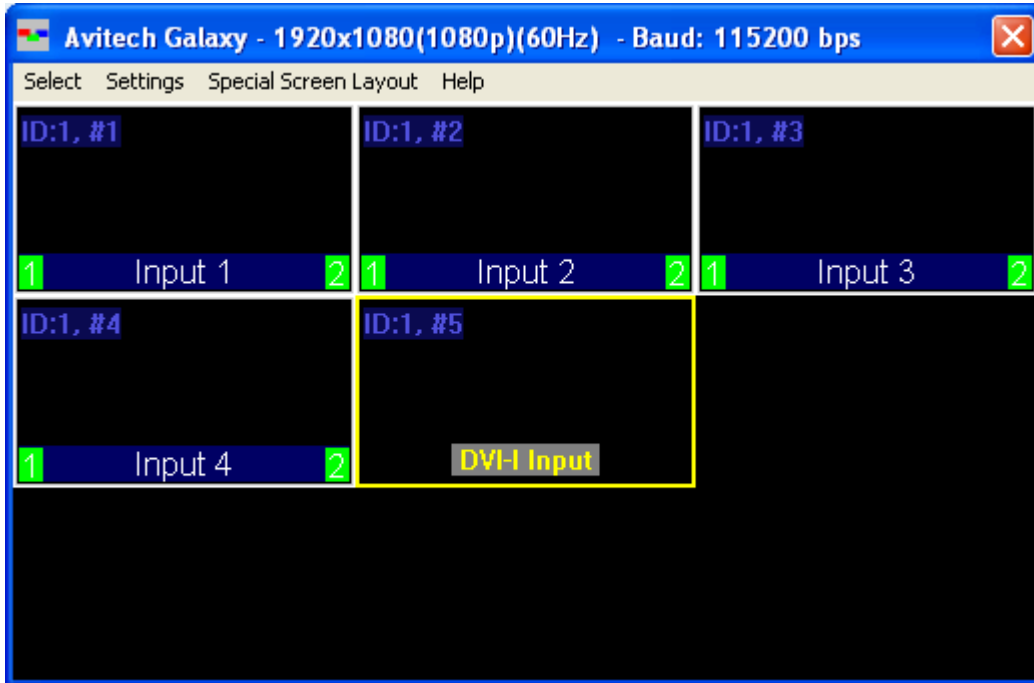
Configuring Galaxy:

Launch Galaxy and choose **Settings>Module Parameter**. Verify that **Rainier OSD** is disabled (no checkmark) and the **Rainier Cascade In Mode** is enabled (with checkmark).

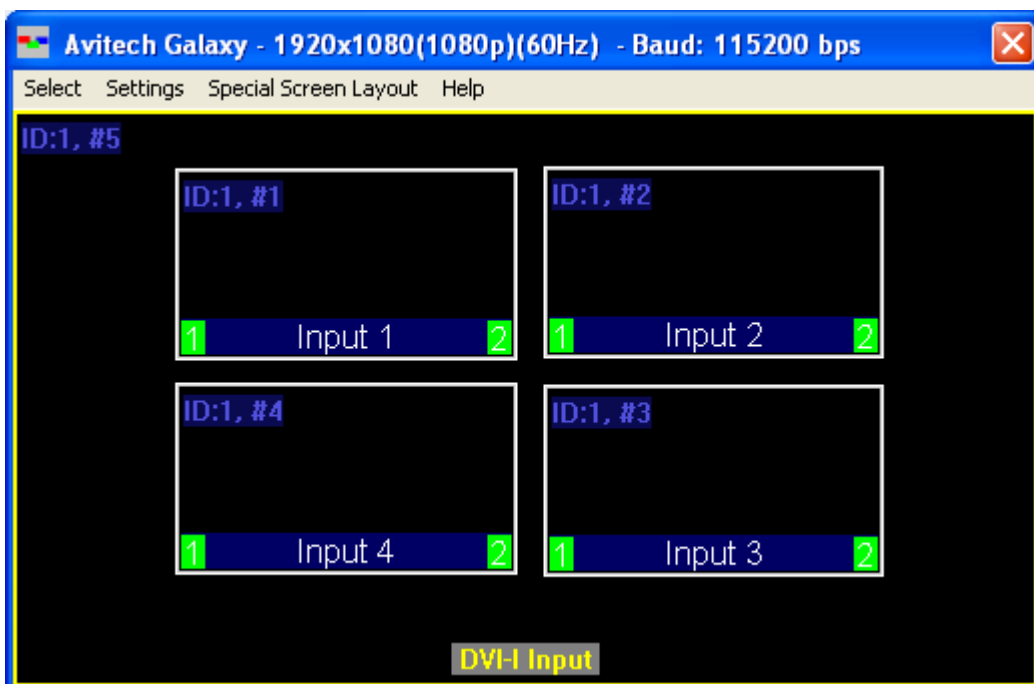
Module Reset	
IP Address	
Y Delay	
Auto Parameter ▶	
Output Timing ▶	
<hr/>	
Clock Window	
<hr/>	
Cascade In VGA Only	
<hr/>	
Tally	
<hr/>	
VGA to Background	
<hr/>	
Analog Clock / Screen Logo ▶	
<hr/>	
GPI Definitions	
Preset Time	
<hr/>	
ACC Setup	
ACC Alarm	
<hr/>	
Rainier OSD	
<hr/>	
TSL	
<hr/>	
✓ Rainier Cascade In mode	
VGA Auto Setting ▶	
VGA Auto Detect ▶	
VGA Auto Detect (Gain) ▶	
<hr/>	
Frame Lock (Fullscreen mode)	
Line Lock	
<hr/>	
VCC8000 BMP Label Resources	
<hr/>	
NTSC Black Level ▶	
<hr/>	
Frame Memory Status ▶	



Your Galaxy desktop will look similar to the screen below. The DVI-I Input window represents the input from your PC.

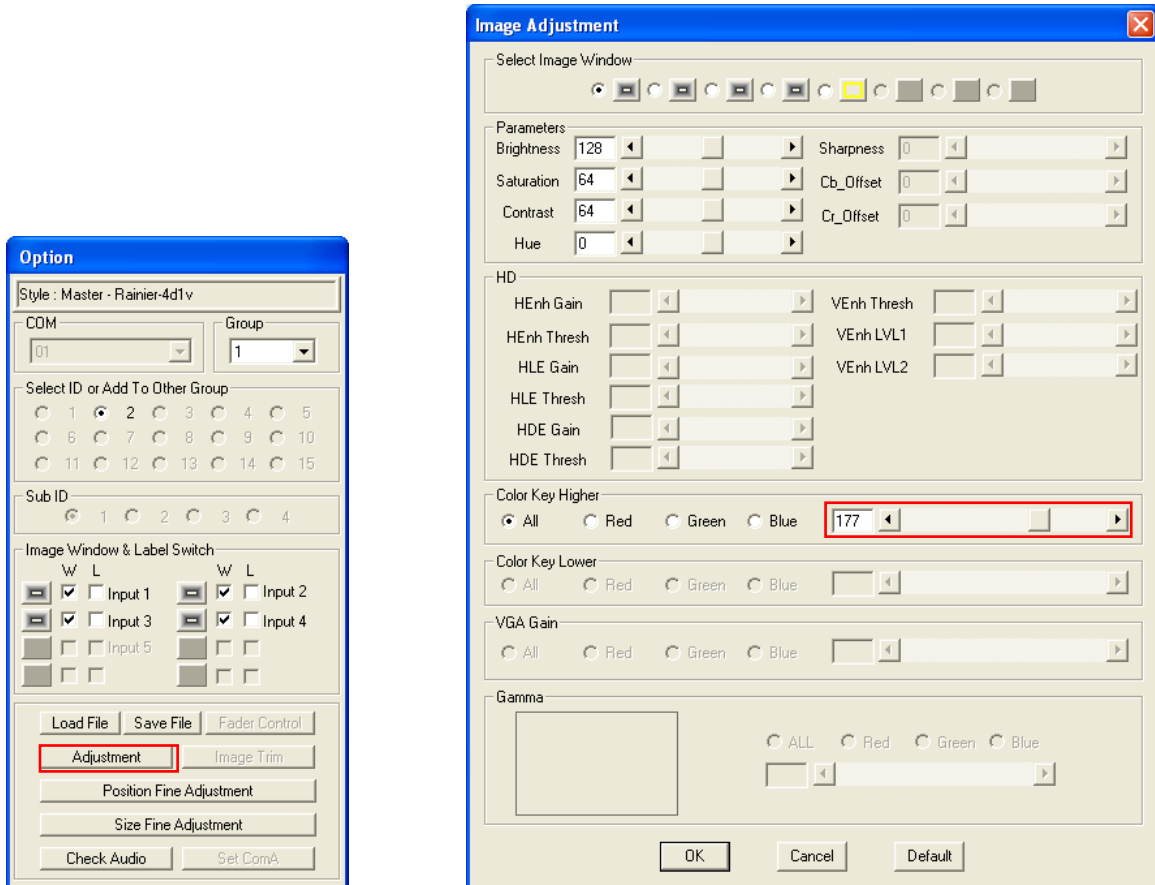


Drag the DVI-I Input window to cover the entire background. The four display windows are positioned inside the boundaries of the DVI-I background.



DVI-I Input Window adjustments:

Click the **Adjustment** button on the **Option** window.



The Image Adjustment screen will appear. Adjust the **Color Key Higher** value (**0 ~ 255**) by using the slider. The higher the value, the more transparent the **DVI-I Input** image will become. Adjust according to your preference.