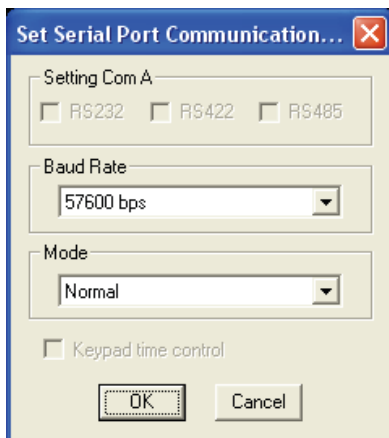


Cascading Rainier-4U1V with Rainier-4d/4a1V

Products: Rainier Series

To cascade a Rainier-4U1V with a Rainier-4d1V or Rainier-4a1V, please follow these steps:

1. Before cascading, connect to the Rainier-4a/d1V with Galaxy and set the Com A baud rate to 57600bps. (The Rainier-4a/d1V baud rate must match the Rainier-4U1V)



2. Exit Galaxy and Save Changes to Flash.
3. Power off the modules and set the Rainier-4U1V as the master – ID 0
Set the Rainier-4a/d1V as a slave – ID 1



4. Cascade the modules using the RS-485 interface and DVI-I looping cables (refer to our “cascading modules” technical document for more details)
5. The controller/computer must be connected to the Rainier-4U1V (master) via IP or RS-232.