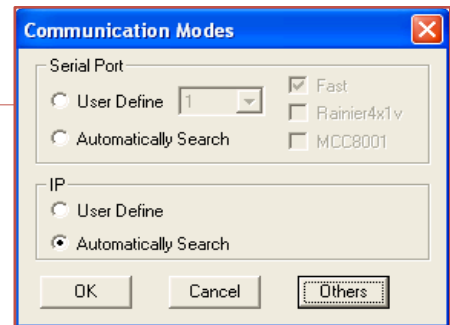


Using Galaxy to change the Clock Background

Products: MCC-8004 series

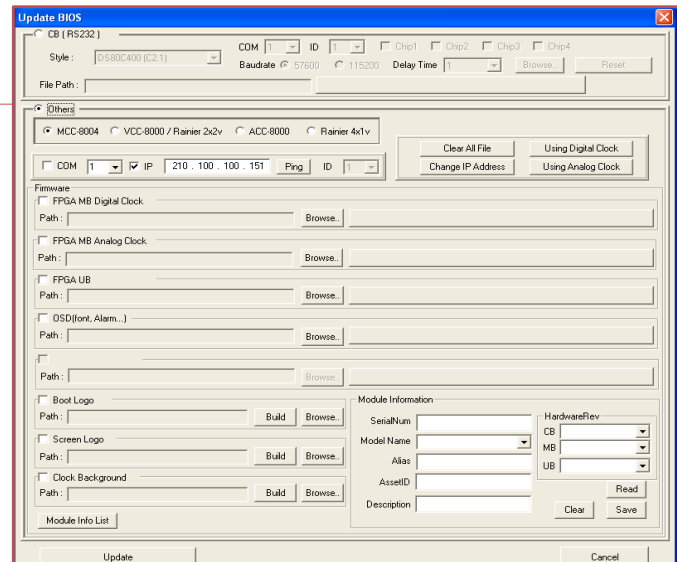
Step 1

Start Galaxy. Communication Modes Window will open.



Step 2

Select 'Others.' Update BIOS window will open



Step 3

Select 'Others.'

Step 4

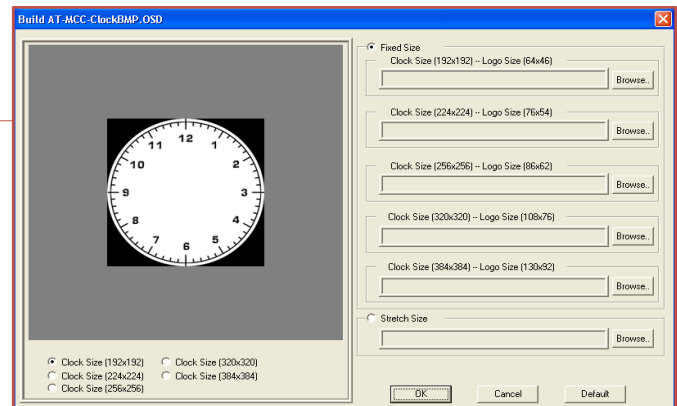
If you are using a serial connection select 'com' and chose the com port number. If you are using IP, select IP and enter the correct IP address. Default IP is 210.100.100.210.

Step 5

Select 'Clock Bacground'

Step 6

Select 'Build' Build At-MCC ... will appear.



Step 7

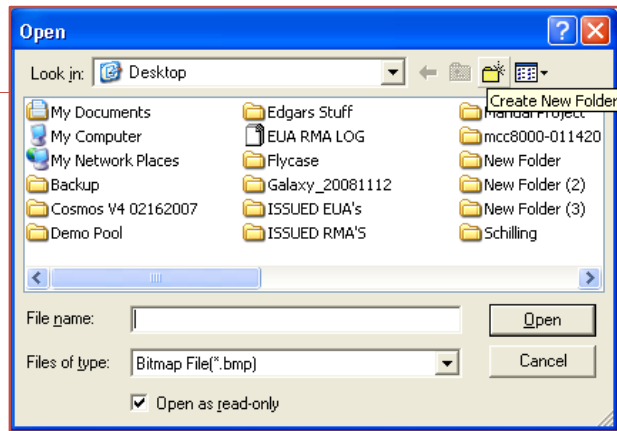
Select the size of the clock from 192x192 to 384x384 pixel.

Step 8

Select the size of the logo 64x46 to 130 x 92 pixel.

Step 9

Select a .bmp 24 bit file to upload.



Step 10

Select 'OK' to exit Built AT MCC ... window.

Step 11

Select 'Update' to finalize changes, and reboot the module.