

Installing the USB to RS-232 cable

Products: MCC-8004 series, VCC-8000 series, Rainier Series, MCC-8001 series, ACC-8000 series

Installing the USB to RS-232 cable



When using Galaxy to configure and control Avitech Multiviewer modules, there must be an established IP or RS-232 Serial communication between the module and your controller/PC.

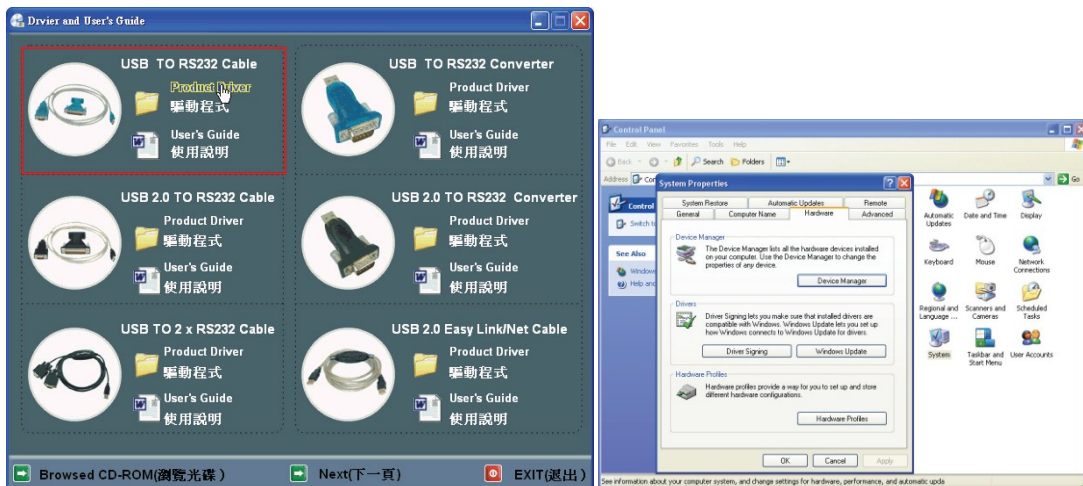
USB to RS-232 adapter installation is required when:

- The Avitech Multiviewer module does not support an IP connection.
- The controller/PC is not equipped with a serial port.

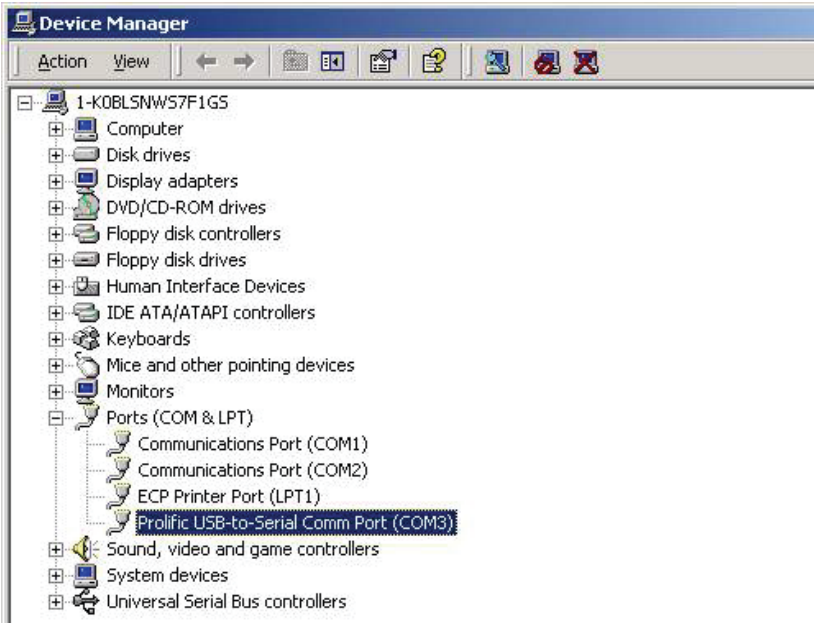
Firmware updates: Both RS-232 Serial and IP are used when performing firmware updates on the MCC and VCC series of modules.

To install the USB to RS-232 drivers, please follow the steps below:

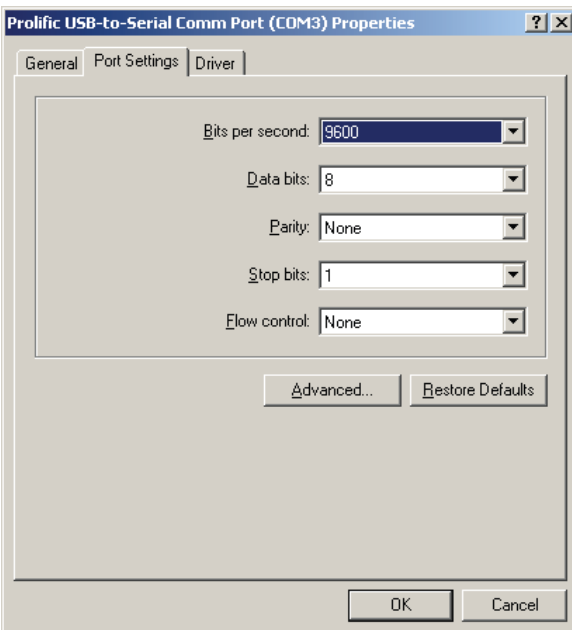
1. Insert the included USB-to-serial converter's USB port side into a port on your computer. The computer's Plug-n-Play's feature will detect the new device and request for the device driver.
2. Insert the driver disc included on the USB-to-serial converter package into the optical drive of your computer and the autorun program would automatically start. If you need to start the program manually, run the **autorun.exe** program of the driver disc.
3. Select the picture on the screen that corresponds to your type of product by clicking on it and follow the onscreen instructions to complete the driver installation. The User Manual is also included on the driver disc
4. After successfully installing the device driver, the computer can now detect the USB-to-serial converter device name. To check, click **Start >Control Panel**. Double-click the **System** icon and when the **System Properties** screen appears, select the **Hardware** tab and then click the **Device Manager** button.



5. The following screen should show the **Prolific USB-to-Serial COM Port**



6. Double-click on this item and the following screen appears. Select the **Port Settings** tab and then click the **Advanced** button.



7. Select an unused **COM Port Number** between 1-10.

